



## Edmonton Alberta

\$429,900

Original owner bungalow half-duplex condo in a quiet, well-maintained adult complex, offering the ease of single-level living with the space you need. Features include a double attached garage, upgraded mechanical systems, and a durable clay tile roof. The main floor is thoughtfully laid out with a spacious primary bedroom with ensuite, a flexible den or second bedroom, full bath, and convenient main floor laundry. The bright living area opens directly to a composite deck for outdoor enjoyment. The fully finished basement provides excellent additional living space with a large recreation room, gas fireplace, an extra bedroom, and a full bathroom--ideal for guests or extended stays. With 3 full bathrooms and nearby visitor parking, this home combines comfort, function, and a prime location close to transit, shopping, and everyday amenities. (id:6769)

Bedroom 3 3.6 m X 3.15 m

Recreation room 8.57 m X 3.8 m

Living room 4.34 m X 4.26 m

Dining room 2.68 m X 1.94 m

Kitchen 3.52 m X 2.68 m

Den Measurements not available

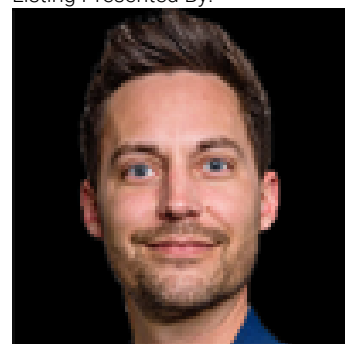
Primary Bedroom 3.79 m X 3.97 m

Bedroom 2 3.82 m X 3.35 m

Mud room 2.68 m X 1.77 m

Storage 2.26 m X 1.38 m

Listing Presented By:



Originally Listed by:  
MaxWell Progressive

<http://www.paulmcpheil.com/>

**RE/MAX ELITE**

**RE/MAX Elite Sherwood Park**

#116, 150 Chippewa Rd ,  
Edmonton, Alberta,

Phone: 780-984-9399

Fax:

steveleddy@hotmail.com

The property information on this website is derived from the Canadian Real Estate Association's Data Distribution Facility (DDF®). DDF® references real estate listings held by various brokerage firms and franchisees. The accuracy of information is not guaranteed and should be independently verified. The trademarks REALTOR®, REALTORS® and the REALTOR® logo are controlled by The Canadian Real Estate Association (CREA) and identify real estate professionals who are members of CREA. The trademarks MLS®, Multiple Listing Service® and the associated logos are owned by CREA and identify the quality of services provided by real estate professionals who are members of CREA.