



St Albert Alberta

\$619,500

Nestled in the heart of Erin Ridge, this charming Original Owner 2-storey home is perfect for families seeking space, comfort, community & situated on a HUGE private lot. FULLY developed - 4bdrm's total & 3.5 baths. Main level: Ceramic tile entry w/ newer maple hardwood (2022) in living rm & den. Bright, open concept island kitchen overlooking the living rm w/ gas fireplace. Kitchen is nicely appointed w/ s/s appliances, gas range, modern white cabinetry w/ extra height upper cab, quartz counters, tiled backsplash (2021) & lighting, motorized blinds, garden dr access to the lrg private south/facing yard. Maint free composite deck w/ metal/glass railings. Upstairs features: 3 bdrm's, primary w/ 5 pce ensuite, main 4 pce bath, large bonus rm plus handy laundry rm. Fully finished bsm't w/ family rm, 4th bdrm, 3 pce bath & storage space. Additional upgrades incl: furnace/AC (2021), HWT (2018), Exterior doors (2022), shingles (2015) & O/S insulated garage w/extra long driveway. Close to great schools & more! (id:6769)

Bedroom 4 3.75 m X 2.49 m

Recreation room 9.12 m X 5.48 m

Storage 4.81 m X 2.34 m

Living room 4.42 m X 4.4 m

Dining room 3.04 m X 2.12 m

Kitchen 5.63 m X 5 m

Den 2.81 m X 4.26 m

Primary Bedroom 4.36 m X 3.95 m

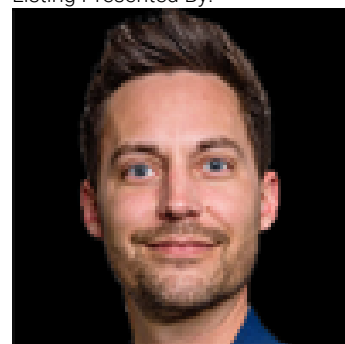
Bedroom 2 2.73 m X 3.75 m

Bedroom 3 3.6 m X 3.75 m

Bonus Room 4.96 m X 4.37 m

Laundry room 1.47 m X 2.44 m

Listing Presented By:



Originally Listed by:
Logic Realty

<http://www.stevemcdonald.ca/>

RE/MAX ELITE

RE/MAX Elite Sherwood Park

#116, 150 Chippewa Rd,
Edmonton, Alberta,

Phone: 780-984-9399

Fax:

steveleddy@hotmail.com

The property information on this website is derived from the Canadian Real Estate Association's Data Distribution Facility (DDF®). DDF® references real estate listings held by various brokerage firms and franchisees. The accuracy of information is not guaranteed and should be independently verified. The trademarks REALTOR®, REALTORS® and the REALTOR® logo are controlled by The Canadian Real Estate Association (CREA) and identify real estate professionals who are members of CREA. The trademarks MLS®, Multiple Listing Service® and the associated logos are owned by CREA and identify the quality of services provided by real estate professionals who are members of CREA.