



## Edmonton Alberta

\$334,900

Southwest-facing two bedroom, two bathroom condo in the Alta Vista South Building. Wonderful location with Grant MacEwan University, LRT line, grocery stores, bars, & restaurants walkable. #403 occupies a corner position, is quiet, bright, & sunny, with beautiful large windows facing trees to the south and unimpeded views west. Bedrooms accommodate queen-sized beds, separated by living areas; the expansive kitchen is open to dining and sitting spaces, which host a corner fireplace, work space, & balcony access. The 180 sq ft balcony provides plenty of space for entertaining, BBQ, container gardening, & sunset viewing! Condo features new flooring, trim, doors, baseboards, & heat pump (2020) supplying efficient heating & cooling, with fresh neutral paint & in-suite laundry. Ensuite bathroom, main bathroom, and kitchen boast granite countertops. Building is exceptionally well-managed, secure, pet-friendly, 18+, and equipped with a fitness room. (id:6769)

Living room 20 m X 12 m

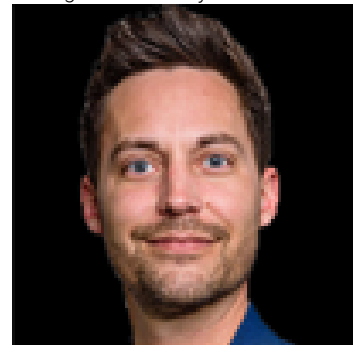
Dining room 10.7 m X 6 m

Kitchen 10.6 m X 8.2 m

Primary Bedroom 11.8 m X 9.7 m

Bedroom 2 10.3 m X 9.4 m

Listing Presented By:



Originally Listed by:  
ComFree

**RE/MAX ELITE**

**RE/MAX Elite Sherwood Park**

#116, 150 Chippewa Rd ,  
Edmonton, Alberta,

Phone: 780-984-9399

Fax:

steveleddy@hotmail.com

The property information on this website is derived from the Canadian Real Estate Association's Data Distribution Facility (DDF®). DDF® references real estate listings held by various brokerage firms and franchisees. The accuracy of information is not guaranteed and should be independently verified. The trademarks REALTOR®, REALTORS® and the REALTOR® logo are controlled by The Canadian Real Estate Association (CREA) and identify real estate professionals who are members of CREA. The trademarks MLS®, Multiple Listing Service® and the associated logos are owned by CREA and identify the quality of services provided by real estate professionals who are members of CREA.