



## Edmonton Alberta

\$425,000

Here's the one you've been waiting for! This 2 Bedroom, 2 full Bath unit comes with bonus after bonus - 2 balconies; 2 Titled Parking stalls (1 oversized underground - long enough for a full size truck & one outdoor) plus a titled storage room. This unit is one of only 2 in the building with this floorplan - large open concept living room/dining room, 2 Bedrooms , 2 full bathrooms offering a spacious ensuite with tub and a guest bathroom off the main living space that has a separate walk-in shower. Modern colour palette & finishes throughout including dark engineered wood flooring, quartz countertops, glass tile backsplash, under-cabinet lighting, stainless steel appliances, A/C & even MOTORIZED WINDOW COVERINGS! There are many added features to living in this community - social activities in the Mosaic Cove lounge (games, movies, exercise class, exercise room, car wash & workshop. Residents also have access to optional onsite HomeCare & Heritage Market Grill Restaurant. (id:6769)

Laundry room 1.67 m X 0.94 m

Utility room 1.3 m X 0.97 m

Living room 4.47 m X 3.53 m

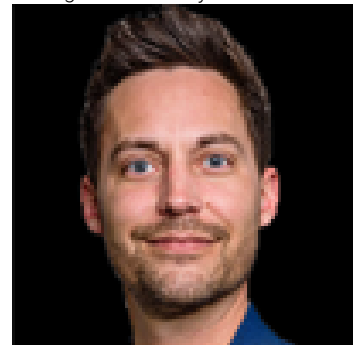
Dining room 4.18 m X 3.64 m

Kitchen 3.16 m X 2.99 m

Primary Bedroom 3.88 m X 3.62 m

Bedroom 2 3.56 m X 3.1 m

Listing Presented By:



Originally Listed by:  
Homes & Gardens Real Estate  
Limited

<http://www.homesandgardensreal.com/>

**RE/MAX ELITE**

**RE/MAX Elite Sherwood Park**

#116, 150 Chippewa Rd ,  
Edmonton, Alberta,

Phone: 780-984-9399

Fax:

steveleddy@hotmail.com

The property information on this website is derived from the Canadian Real Estate Association's Data Distribution Facility (DDF®). DDF® references real estate listings held by various brokerage firms and franchisees. The accuracy of information is not guaranteed and should be independently verified. The trademarks REALTOR®, REALTORS® and the REALTOR® logo are controlled by The Canadian Real Estate Association (CREA) and identify real estate professionals who are members of CREA. The trademarks MLS®, Multiple Listing Service® and the associated logos are owned by CREA and identify the quality of services provided by real estate professionals who are members of CREA.