



Sherwood Park Alberta

\$369,900

Welcome to The Palisades, a well-managed 18+ concrete and steel building backing onto a peaceful, treed ravine in Sherwood Park. This bright northeast corner unit offers 2 bdrms, 2 full baths, and 2 private balconies- a massive north-facing balcony plus a 2nd northeast-facing space to enjoy the tranquil setting. The open-concept layout features a spacious kitchen w/ ample cabinetry, a generous dining area, and a sun-filled living room surrounded by windows. The primary bedroom includes a walk-through closet & a 3-piece ensuite, while the 2nd bedroom is conveniently located next to the main 4-piece bath. Additional highlights include in-suite laundry w/ oversized storage, a recently updated heating unit, heated underground parking w/ an attached storage unit, plus a second covered surface stall with plug-in. Residents also enjoy access to an exceptional fitness facility within the building, along with a beautiful social room located in the adjacent building, both included as part of the condo fees!! (id:6769)

Living room 3.45 m X 4.8 m

Dining room 3.91 m X 3.02 m

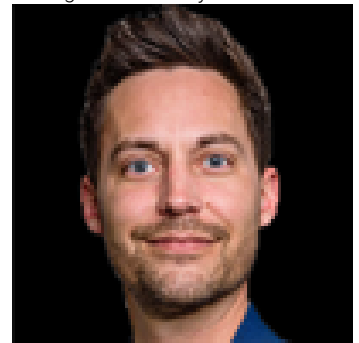
Kitchen 3.92 m X 2.74 m

Primary Bedroom 3.26 m X 5.99 m

Bedroom 2 4.23 m X 3.66 m

Laundry room 2.38 m X 2.48 m

Listing Presented By:



Originally Listed by:
MaxWell Devonshire Realty

<http://www.lorenzteam.com/>

RE/MAX ELITE

RE/MAX Elite Sherwood Park

#116, 150 Chippewa Rd ,
Edmonton, Alberta,

Phone: 780-984-9399

Fax:

steveleddy@hotmail.com

The property information on this website is derived from the Canadian Real Estate Association's Data Distribution Facility (DDF®). DDF® references real estate listings held by various brokerage firms and franchisees. The accuracy of information is not guaranteed and should be independently verified. The trademarks REALTOR®, REALTORS® and the REALTOR® logo are controlled by The Canadian Real Estate Association (CREA) and identify real estate professionals who are members of CREA. The trademarks MLS®, Multiple Listing Service® and the associated logos are owned by CREA and identify the quality of services provided by real estate professionals who are members of CREA.