



## Edmonton Alberta

\$170,000

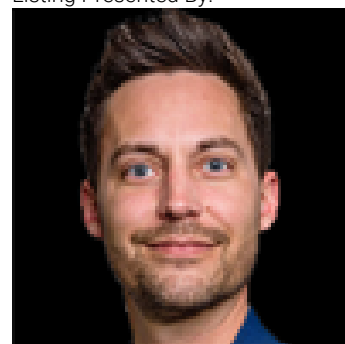
Judicial listing - sold as is, where is, how is. This complex has rooftop deck with BBQ area, exercise space, and underground parking. Close to all amenities. (id:6769)

Living room Measurements not available

Primary Bedroom Measurements not available

Kitchen Measurements not available

Listing Presented By:



Originally Listed by:  
RE/MAX Elite

<http://www.macmillanrealty.ca/>

**RE/MAX ELITE**

**RE/MAX Elite Sherwood Park**

#116, 150 Chippewa Rd ,  
Edmonton, Alberta,

Phone: 780-984-9399

Fax:

steveleddy@hotmail.com

The property information on this website is derived from the Canadian Real Estate Association's Data Distribution Facility (DDF®). DDF® references real estate listings held by various brokerage firms and franchisees. The accuracy of information is not guaranteed and should be independently verified. The trademarks REALTOR®, REALTORS® and the REALTOR® logo are controlled by The Canadian Real Estate Association (CREA) and identify real estate professionals who are members of CREA. The trademarks MLS®, Multiple Listing Service® and the associated logos are owned by CREA and identify the quality of services provided by real estate professionals who are members of CREA.