



Edmonton Alberta

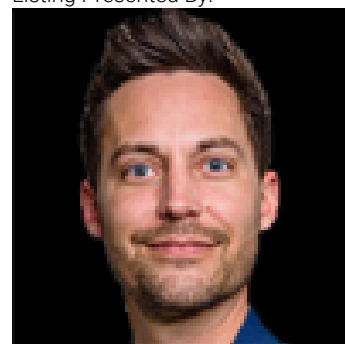
\$375,000

Welcome to Le Quartier in desirable Bonnie Doon! This stunning top-floor, north-facing suite offers stylish modern living just steps from the Universite de Saint-Jean and award-winning La Cite Francophone. Featuring 2 spacious bedrooms and 2 full bathrooms, including a primary suite with ensuite, this bright open-concept home showcases quartz countertops, a large island, stainless steel appliances, hardwood flooring, and elegant neutral finishes. The living and dining areas are filled with natural light and open to a private balcony with pergola and gas hookup--perfect for relaxing or entertaining. Additional features include in-suite laundry, a titled underground parking stall, and secure titled storage. The building offers a community room for residents to enjoy. Exceptional location within walking distance to parks, trails, Mill Creek Ravine, Bonnie Doon Shopping Centre, restaurants, and transit, with easy access to Whyte Avenue, Strathcona, and Downtown. Ideal for professionals, students, or investors (id:6769)

Primary Bedroom Measurements not available

Bedroom 2 Measurements not available

Listing Presented By:



Originally Listed by:
Exp Realty

RE/MAX ELITE

RE/MAX Elite Sherwood Park

#116, 150 Chippewa Rd ,
Edmonton, Alberta,

Phone: 780-984-9399

Fax:

steveleddy@hotmail.com

The property information on this website is derived from the Canadian Real Estate Association's Data Distribution Facility (DDF®). DDF® references real estate listings held by various brokerage firms and franchisees. The accuracy of information is not guaranteed and should be independently verified. The trademarks REALTOR®, REALTORS® and the REALTOR® logo are controlled by The Canadian Real Estate Association (CREA) and identify real estate professionals who are members of CREA. The trademarks MLS®, Multiple Listing Service® and the associated logos are owned by CREA and identify the quality of services provided by real estate professionals who are members of CREA.