



## Sherwood Park Alberta

\$1,175,000

With nearly 4,000 sq ft of living space, this exceptional walkout home in Summerwood backs onto a tranquil pond, offering a rare blend of luxury, space, and everyday functionality. Enjoy peaceful water views, direct access to walking paths, and a layout designed for both family living and entertaining, with bright open spaces and a seamless indoor-outdoor connection. Featuring 6 bedrooms and 5 bathrooms, the main floor showcases a chef-inspired kitchen with quartz countertops, two-tone cabinetry, a large island, and built-in appliances, flowing into a living area anchored by a striking fireplace and expansive windows. Upstairs offers a bonus room and a spa-like primary retreat with a freestanding tub, glass shower, and walk-in closet. The fully finished walkout basement adds a large rec space, wet bar, additional bedrooms, and a full bath--an exceptional opportunity in one of Sherwood Park's most desirable communities. (id:6769)

Bedroom 5 Measurements not available

Bedroom 6 Measurements not available

Living room Measurements not available

Dining room Measurements not available

Kitchen Measurements not available

Office Measurements not available

Primary Bedroom Measurements not available

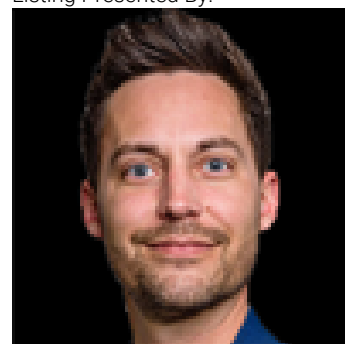
Bedroom 2 Measurements not available

Bedroom 3 Measurements not available

Bedroom 4 Measurements not available

Bonus Room Measurements not available

Listing Presented By:



Originally Listed by:  
Royal Lepage Arteam Realty

**RE/MAX ELITE**

**RE/MAX Elite Sherwood Park**

#116, 150 Chippewa Rd ,  
Edmonton, Alberta,

Phone: 780-984-9399

Fax:

steveleddy@hotmail.com

The property information on this website is derived from the Canadian Real Estate Association's Data Distribution Facility (DDF®). DDF® references real estate listings held by various brokerage firms and franchisees. The accuracy of information is not guaranteed and should be independently verified. The trademarks REALTOR®, REALTORS® and the REALTOR® logo are controlled by The Canadian Real Estate Association (CREA) and identify real estate professionals who are members of CREA. The trademarks MLS®, Multiple Listing Service® and the associated logos are owned by CREA and identify the quality of services provided by real estate professionals who are members of CREA.