



Rural Lac Ste Anne County Alberta

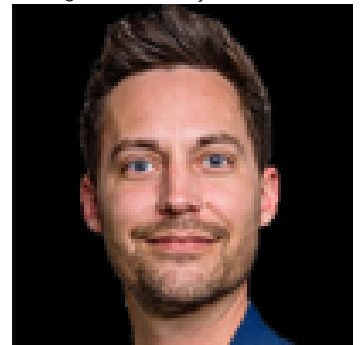
\$89,900

Unfinished Executive 2 Bedroom Cabin at Isle Lake in FORECLOSURE! Bare Land Condominium. The home is at primed drywall, you get to pick all your finishes! Four foot high concrete crawl space. Exterior features a full length covered front porch, gazebo and fireproof hardie board siding. Laundry is behind the kitchen for stackable machines. Patio doors lead to the back deck. Living room has large windows looking onto the front deck. Double doors lead into the primary bedroom, mirrored closet doors and a view of the lake. Second bathroom and 4 piece bathroom finishes the cabin! THE SERVICES IN THIS PROJECT ARE CURRENTLY NOT WORKING AND THE ESTIMATE IS AT LEAST A YEAR. SELLER WILL ENTERTAIN OFFERS FOR THE BUILDING ONLY. (id:6769)

Primary Bedroom Measurements not available

Bedroom 2 Measurements not available

Listing Presented By:



Originally Listed by:
Prairie Rose Realty

<http://www.lacsteannerealestate.com/>

RE/MAX ELITE

RE/MAX Elite Sherwood Park

#116, 150 Chippewa Rd ,
Edmonton, Alberta,

Phone: 780-984-9399

Fax:

steveleddy@hotmail.com

The property information on this website is derived from the Canadian Real Estate Association's Data Distribution Facility (DDF®). DDF® references real estate listings held by various brokerage firms and franchisees. The accuracy of information is not guaranteed and should be independently verified. The trademarks REALTOR®, REALTORS® and the REALTOR® logo are controlled by The Canadian Real Estate Association (CREA) and identify real estate professionals who are members of CREA. The trademarks MLS®, Multiple Listing Service® and the associated logos are owned by CREA and identify the quality of services provided by real estate professionals who are members of CREA.