



Edmonton Alberta

\$244,900

Beautiful opened layout !!! 2 BEDROOMS - 2 BATHROOMS ,Freshly painted and Very well maintained .This unit shows pride of ownership throughout. Huge living room with corner gas fireplace .Tons of natural light .Good size balcony with gas connection for your barbeque .Facing into the courtyard with a distant view of downtown Edmonton (especially at night) .Large master bedroom with 4 piece ensuite and walk in closet .Second bedroom is good size with wall to wall closet .In suite laundry with room for deepfreeze and extra storage .All appliances stay ! Underground parking ,cage storage ,car wash all included .Amenity building ,work out room ,sauna and steam room ,pool table ,shuffle board available to all residents. LRT ,Shopping ,Medical offices , Freeways all in close accessibility . Excellent complex and easy living is what you will experience at Sienna Point. (id:6769)

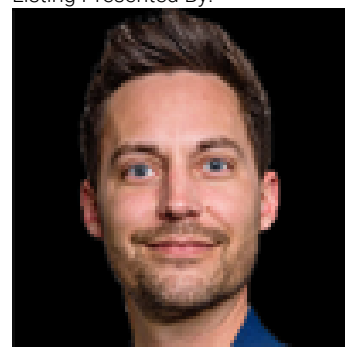
Living room 4.88 m X 4.88 m

Kitchen 4.57 m X 4.27 m

Primary Bedroom 4.27 m X 3.66 m

Bedroom 2 3.66 m X 3.35 m

Listing Presented By:



Originally Listed by:
RE/MAX Real Estate

<http://www.edmontonhomefinders.com/>

RE/MAX ELITE

RE/MAX Elite Sherwood Park

#116, 150 Chippewa Rd ,
Edmonton, Alberta,

Phone: 780-984-9399

Fax:

steveleddy@hotmail.com

The property information on this website is derived from the Canadian Real Estate Association's Data Distribution Facility (DDF®). DDF® references real estate listings held by various brokerage firms and franchisees. The accuracy of information is not guaranteed and should be independently verified. The trademarks REALTOR®, REALTORS® and the REALTOR® logo are controlled by The Canadian Real Estate Association (CREA) and identify real estate professionals who are members of CREA. The trademarks MLS®, Multiple Listing Service® and the associated logos are owned by CREA and identify the quality of services provided by real estate professionals who are members of CREA.