

Edmonton Alberta

\$250,000

Welcome to Glenora Gates in the vibrant community of Westmount! This top-floor 2-bedroom end unit offers a bright, open-concept layout with a stylish kitchen featuring rich cabinetry, stainless steel appliances, and ample counter space--perfect for cooking and entertaining. The dining and living areas are filled with natural light from large windows showcasing stunning downtown views. The primary bedroom provides a relaxing retreat, while the second bedroom works perfectly for guests, a home office, or creative space. A 4-piece bathroom, in-suite laundry, and elevator access add everyday convenience. Stay cool with central A/C and host friends on the spacious balcony with a gas BBQ hookup. This unit also includes a titled parking stall with a storage cage for your extra belongings. Ideally located just steps to shopping, dining, coffee shops, public transit, and all amenities--this home combines comfort, style, and the best of urban living. (id:6769)

Living room 3.47 m X 5.04 m

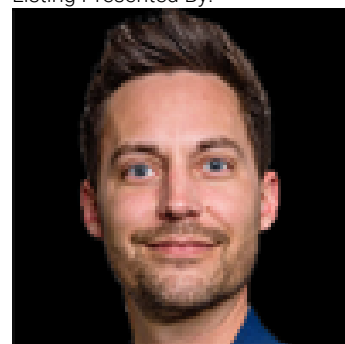
Dining room 4.36 m X 1.94 m

Kitchen 4.36 m X 3.11 m

Primary Bedroom 2.87 m X 4.26 m

Bedroom 2 2.87 m X 3.91 m

Listing Presented By:



Originally Listed by:
Real Broker

<http://www.michaelwaddell.ca/>

RE/MAX ELITE

RE/MAX Elite Sherwood Park

#116, 150 Chippewa Rd ,
Edmonton, Alberta,

Phone: 780-984-9399

Fax:

steveleddy@hotmail.com

The property information on this website is derived from the Canadian Real Estate Association's Data Distribution Facility (DDF®). DDF® references real estate listings held by various brokerage firms and franchisees. The accuracy of information is not guaranteed and should be independently verified. The trademarks REALTOR®, REALTORS® and the REALTOR® logo are controlled by The Canadian Real Estate Association (CREA) and identify real estate professionals who are members of CREA. The trademarks MLS®, Multiple Listing Service® and the associated logos are owned by CREA and identify the quality of services provided by real estate professionals who are members of CREA.