



Beaumont Alberta

\$629,900

****OPEN TO BELOW**BACKING TO PARK**MAINFLOOR BEDROOM**SPICE KITCHEN** TWO MASTER BEDROOM** **This thoughtfully crafted home showcases a bright, contemporary open-concept design perfectly suited for modern living. The main floor offers a generous great room, a separate dining space, and a stylish spice kitchen featuring quartz countertops and a gas range. A convenient main-floor bedroom with a full bath provides excellent flexibility for guests or extended family. Upstairs, the spacious primary retreat includes a walk-in closet and an elegant ensuite, alongside three additional bedrooms, a bonus room, and a centrally located laundry area. Quality construction is evident throughout, complemented by an attached double garage and a foundation prepared for radon mitigation. Situated on a quiet street near parks, schools, and everyday amenities, this home is ideal for creating lasting memories. Photos are representative. (id:6769)

Living room 3.73m x 4.46m

Dining room 3.79m x 2.74m

Kitchen 3.25m x 3.68m

Bedroom 4 3.00m x 2.72m

Primary Bedroom 4.26m x 4.75m

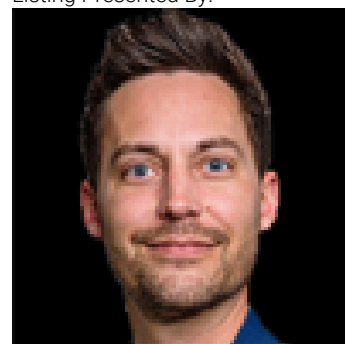
Bedroom 2 3.19m x 3.30m

Bedroom 3 3.68m x 4.66m

Bonus Room 4.22m x 3.66m

Laundry room Measurements not available

Listing Presented By:



Originally Listed by:
Nationwide Realty Corp

RE/MAX ELITE

RE/MAX Elite Sherwood Park

#116, 150 Chippewa Rd,
Edmonton, Alberta,

Phone: 780-984-9399

Fax:

steveleddy@hotmail.com

The property information on this website is derived from the Canadian Real Estate Association's Data Distribution Facility (DDF®). DDF® references real estate listings held by various brokerage firms and franchisees. The accuracy of information is not guaranteed and should be independently verified. The trademarks REALTOR®, REALTORS® and the REALTOR® logo are controlled by The Canadian Real Estate Association (CREA) and identify real estate professionals who are members of CREA. The trademarks MLS®, Multiple Listing Service® and the associated logos are owned by CREA and identify the quality of services provided by real estate professionals who are members of CREA.