



Beaumont Alberta

\$525,000

Located in one of Beaumont's most desirable communities, this stunning home offers 1642 sq ft of stylish living space. Just steps from top-rated schools, parks, and playgrounds, it's perfect for families. Inside, you'll find upgraded finishes throughout, including quartz countertops, luxury vinyl plank flooring, and custom cabinetry. The main level features a bright open-concept layout with a spacious living area, modern kitchen, and a versatile den—ideal for a home office or study. Upstairs, enjoy three generously sized bedrooms, including a beautiful primary suite with walk-in closet and a 4-piece ensuite. With 2.5 bathrooms and thoughtful design throughout, this home combines comfort, elegance, and convenience in an unbeatable location. (id:6769)

Living room Measurements not available

Dining room Measurements not available

Kitchen Measurements not available

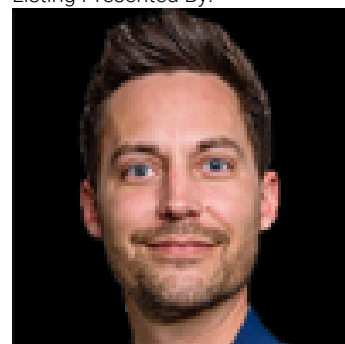
Den Measurements not available

Primary Bedroom Measurements not available

Bedroom 2 Measurements not available

Bedroom 3 Measurements not available

Listing Presented By:



Originally Listed by:
Real Broker

RE/MAX ELITE

RE/MAX Elite Sherwood Park

#116, 150 Chippewa Rd ,
Edmonton, Alberta,

Phone: 780-984-9399

Fax:

steveleddy@hotmail.com