



Edmonton Alberta

\$279,900

Welcome to Grande Lewis Estates! This bright, 2-bed plus den/office unit blends comfort and convenience with wonderful outdoor space. Enjoy central AC, a cozy gas fireplace, and that spacious balcony with serene views. The kitchen features crisp white cabinetry, tile backsplash, and ample natural light. Double oven is a great chef's touch! Primary bedroom features an ensuite and walk-in closet. In-suite laundry is a convenient touch. Includes 2 parking stalls (#331 & #336) and is well located in the heart of Lewis Estates with quick access to Henday, Whitemud, shopping, and amenities. Building updates are fully paid, with a strong reserve fund for peace of mind. A rare find in a prime location across the road from Lewis Estates Golf Course. (id:6769)

Living room 4.71 m X 3.31 m

Dining room 4.71 m X 3.94 m

Kitchen 3.65 m X 3.15 m

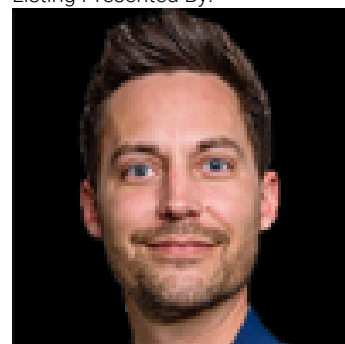
Den 3.42 m X 2.28 m

Primary Bedroom 3.89 m X 5.32 m

Bedroom 2 5.01 m X 3.32 m

Laundry room 2.25 m X 2.11 m

Listing Presented By:



Originally Listed by:
REMAX River City

<https://www.edmontonhomemarketing.com/>

RE/MAX ELITE

RE/MAX Elite Sherwood Park

#116, 150 Chippewa Rd ,
Edmonton, Alberta,

Phone: 780-984-9399

Fax:

steveleddy@hotmail.com

The property information on this website is derived from the Canadian Real Estate Association's Data Distribution Facility (DDF®). DDF® references real estate listings held by various brokerage firms and franchisees. The accuracy of information is not guaranteed and should be independently verified. The trademarks REALTOR®, REALTORS® and the REALTOR® logo are controlled by The Canadian Real Estate Association (CREA) and identify real estate professionals who are members of CREA. The trademarks MLS®, Multiple Listing Service® and the associated logos are owned by CREA and identify the quality of services provided by real estate professionals who are members of CREA.