



Edmonton Alberta

\$999,900

This RARE opportunity along prestigious Donsdale Dr showcases a custom 2-storey w/ an open-concept design & refined finishes. The main floor offers a private den/office, living room w/ gas fireplace & dining area w/ garden doors to a two-tier deck & large fenced backyard, ideal for entertaining & daily living. The kitchen anchors the space w/ hardwood cabinetry, a centre island w/ translucent granite, and a walk-through pantry. Upstairs features a bonus room, upper laundry & a convenient 2-piece bath. Two bedrooms w/ built-in closets are connected by a Jack & Jill 5-piece bath, while the private primary retreat features VAULTED ceilings, a spa-inspired ensuite w/ soaker tub & a dressing room w/ walk-in closet. IN-FLOOR heating enhances comfort in key areas including the basement, primary ensuite & garage. The finished basement offers a family room, wet bar & 4-pc bath. A heated TANDEM TRIPLE garage accommodates up to 4 vehicles w/ floor drains and workshop space. Your dream home awaits! (id:6769)

Recreation room 9.34 m X 7.3 m

Other 3.45 m X 3.16 m

Living room 5.09 m X 4.74 m

Dining room 4.72 m X 3 m

Kitchen 4.83 m X 3.99 m

Den 3.35 m X 3.35 m

Primary Bedroom 6.31 m X 4.59 m

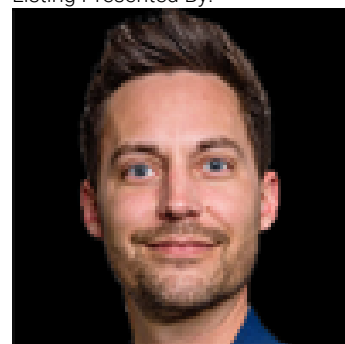
Bedroom 2 5.48 m X 3.37 m

Bedroom 3 4.83 m X 4.03 m

Bonus Room 4.68 m X 4.24 m

Laundry room Measurements not available

Listing Presented By:



Originally Listed by:
RE/MAX Excellence

<http://www.robertsonrealestategroup.ca/>

RE/MAX ELITE

RE/MAX Elite Sherwood Park

#116, 150 Chippewa Rd ,
Edmonton, Alberta,

Phone: 780-984-9399

Fax:

steveleddy@hotmail.com

The property information on this website is derived from the Canadian Real Estate Association's Data Distribution Facility (DDF®). DDF® references real estate listings held by various brokerage firms and franchisees. The accuracy of information is not guaranteed and should be independently verified. The trademarks REALTOR®, REALTORS® and the REALTOR® logo are controlled by The Canadian Real Estate Association (CREA) and identify real estate professionals who are members of CREA. The trademarks MLS®, Multiple Listing Service® and the associated logos are owned by CREA and identify the quality of services provided by real estate professionals who are members of CREA.