

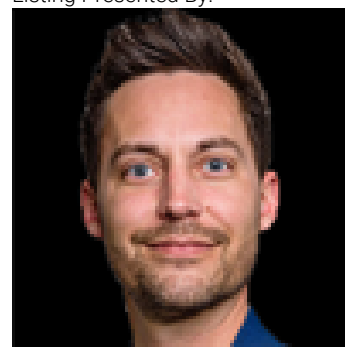


473 Mistatim Way Edmonton AB

\$1,095,000

Diverse Commercial Mix: Cohesive mix of office, retail, and service oriented businesses. The site is home to a large hotel, a national gas station, a national quick-service restaurant, and a range of other complimentary businesses. Rare Development Opportunity: Ready and serviced site. 0.99 Acre? development parcel in North West Crossing. Strategic Location: Easily accessible to Anthony Henday Drive & Yellowhead Trail with visibility from two major arterial roads: Mark Messier Trail & 137 Ave, which collectively boasts a count of approximately 70,000 vehicles per day. Zoning: CB Accommodates a variety of retail/office uses.

Listing Presented By:



Originally Listed by:
NAI Commercial Real Estate Inc

vcaputo@naiedmonton.com



RE/MAX Elite Sherwood Park

#116, 150 Chippewa Rd ,
Edmonton, Alberta,

Phone: 780-984-9399

Fax:
steveleddy@hotmail.com