



## Edmonton Alberta

\$259,000

Welcome to Terwillegar Inspirations, a sought-after and exceptionally managed complex in South Terwillegar. This top-floor unit features two generous bedrooms, including a primary suite with a private ensuite. Enjoy an open-concept layout, a modern kitchen with granite countertops and stainless steel appliances, and a spacious laundry room with ample storage and a new hot-water tank. The bright living room boasts a cozy fireplace, while the large balcony provides extra storage. As a top-floor unit, you'll never have neighbours above. Condo fees are \$377 per month and cover water, sewer, garbage, common-area insurance, and reserve fund contributions. Located just minutes from Anthony Henday, Terwillegar Recreation Centre, shopping, and public transportation, this home offers convenience and comfort. (id:6769)

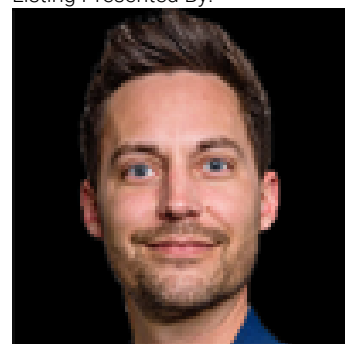
Living room Measurements not available

Kitchen Measurements not available

Primary Bedroom Measurements not available

Bedroom 2 Measurements not available

Listing Presented By:



Originally Listed by:  
RE/MAX Real Estate

<http://www.look4edmontonhomes.com/>

**RE/MAX ELITE**

**RE/MAX Elite Sherwood Park**

#116, 150 Chippewa Rd ,  
Edmonton, Alberta,

Phone: 780-984-9399

Fax:

steveleddy@hotmail.com

The property information on this website is derived from the Canadian Real Estate Association's Data Distribution Facility (DDF®). DDF® references real estate listings held by various brokerage firms and franchisees. The accuracy of information is not guaranteed and should be independently verified. The trademarks REALTOR®, REALTORS® and the REALTOR® logo are controlled by The Canadian Real Estate Association (CREA) and identify real estate professionals who are members of CREA. The trademarks MLS®, Multiple Listing Service® and the associated logos are owned by CREA and identify the quality of services provided by real estate professionals who are members of CREA.