



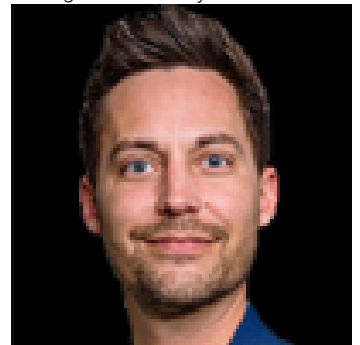
Fort Saskatchewan Alberta

\$300,000

WELCOME TO THIS JUDICIAL SALE OPPORTUNITY IN THE HEART OF OLD FORT SASKATCHEWAN! Located in a MATURE, HIGHLY DESIRABLE COMMUNITY known for its TREE-LINED STREETS, LARGE LOTS, and CLOSE PROXIMITY TO THE RIVER VALLEY, PARKS, SCHOOLS, AND DOWNTOWN AMENITIES, this property offers EXCELLENT POTENTIAL for the RIGHT BUYER. This BUNGALOW presents a GREAT OPPORTUNITY for INVESTORS, RENOVATORS, OR BUILDERS looking to ADD VALUE in an ESTABLISHED NEIGHBOURHOOD. Please note: PROPERTY IS BEING SOLD "AS IS, WHERE IS" AT TIME OF POSSESSION. NO ACCESS FOR INTERIOR VIEWINGS and NO REPRESENTATIONS OR WARRANTIES are provided. All information, including measurements and condition, is UNKNOWN and must be VERIFIED BY THE BUYER. RARELY DO OPPORTUNITIES LIKE THIS COME AVAILABLE IN SUCH A STRONG LOCATION--BRING YOUR VISION AND TAKE ADVANTAGE OF THE POTENTIAL! (id:6769)

Primary Bedroom Measurements not available

Listing Presented By:



Originally Listed by:
Exp Realty

RE/MAX ELITE

RE/MAX Elite Sherwood Park

#116, 150 Chippewa Rd ,
Edmonton, Alberta,

Phone: 780-984-9399

Fax:

steveleddy@hotmail.com

The property information on this website is derived from the Canadian Real Estate Association's Data Distribution Facility (DDF®). DDF® references real estate listings held by various brokerage firms and franchisees. The accuracy of information is not guaranteed and should be independently verified. The trademarks REALTOR®, REALTORS® and the REALTOR® logo are controlled by The Canadian Real Estate Association (CREA) and identify real estate professionals who are members of CREA. The trademarks MLS®, Multiple Listing Service® and the associated logos are owned by CREA and identify the quality of services provided by real estate professionals who are members of CREA.