

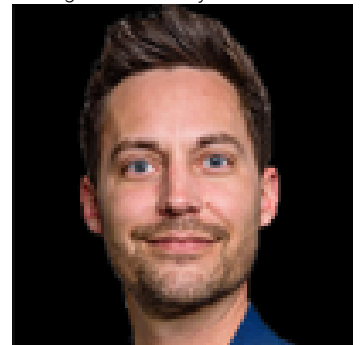


## 5 ROBIN Street Sherwood Park AB

\$529,800

WHEEL CHAIR DESIGNED HOME. This home has been reengineered for persons with disabilities. From the front lift to the solid 2" tamarack deck and the zero-clearance threshold, this home is designed around mobility. The LED pot lights, heating, fireplace and window blinds are all App controlled. The living room and kitchen area are wide open. The halls and doorways are extra wide. All interior door are barn style for ease of operation. The custom kitchen was carefully crafted from walnut, oak and English beech. It features 27' of counter space with several built-in quartz cutting boards. There is a pot filler over the induction stove, a side opening oven and a custom work station. Both bathrooms feature Italian porcelain tile. Both are barrier-free complete with linear drains and roll-under vanities. The basement has a separate entry and is ready to be developed. It can be a legal suite (permit in place) a caregivers suite, or an additional work space.

Listing Presented By:



Originally Listed by:  
homeFree

erin@homefree.com

**RE/MAX ELITE**

**RE/MAX Elite Sherwood Park**

#116, 150 Chippewa Rd ,  
Edmonton, Alberta,

Phone: 780-984-9399

Fax:

steveleddy@hotmail.com