



## Spruce Grove Alberta

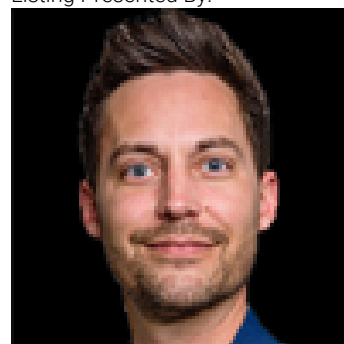
\$639,000

Located in the community of Tonewood, this impressive two storey home offers almost 2,300 sq. ft. of air conditioned living space designed for modern family life. The main floor features vinyl plank flooring, a versatile bedroom or office, and a show stopping open living area with soaring ceilings and a gas fireplace. The sleek kitchen shines with quartz countertops, full height cabinetry, stainless steel appliances, a large island, and a walk through pantry flowing seamlessly into a sun filled dining space. Upstairs, the primary retreat boasts a five piece ensuite and a giant walk in closet with custom, high end organizers, while two additional bedrooms each offer generously sized closets with incredible built in organizers. A full bath, upper floor laundry, and a spacious bonus room complete the level. The unfinished basement provides future development potential, while the fully fenced and landscaped backyard with deck, triple pane windows throughout, and a gas BBQ hookup make this move in ready. (id:6769)

Living room 3.98m x 4.55m  
Dining room 3.63m x 3.07m  
Kitchen 3.62m x 4.00m  
Bedroom 4 3.03m x 2.93m

Primary Bedroom 4.25m x 3.66m  
Bedroom 2 3.64m x 4.48m  
Bedroom 3 2.87m x 3.53m

Listing Presented By:



Originally Listed by:  
RE/MAX PREFERRED CHOICE



**RE/MAX Elite Sherwood Park**

#116, 150 Chippewa Rd ,  
Edmonton, Alberta,

Phone: 780-984-9399  
Fax:  
steveleddy@hotmail.com

The property information on this website is derived from the Canadian Real Estate Association's Data Distribution Facility (DDF®). DDF® references real estate listings held by various brokerage firms and franchisees. The accuracy of information is not guaranteed and should be independently verified. The trademarks REALTOR®, REALTORS® and the REALTOR® logo are controlled by The Canadian Real Estate Association (CREA) and identify real estate professionals who are members of CREA. The trademarks MLS®, Multiple Listing Service® and the associated logos are owned by CREA and identify the quality of services provided by real estate professionals who are members of CREA.