

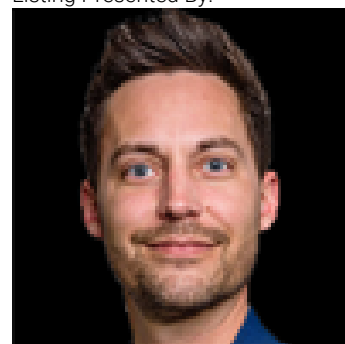


## Rural Lac Ste Anne County Alberta

\$219,888

Build your dream lake retreat in the prestigious Estates at Waters Edge on beautiful Lac Ste. Anne. This 0.22-acre lot offers the perfect opportunity to create a custom home or getaway in one of Alberta's premier gated lake communities. Just 45 minutes from Edmonton, Waters Edge combines the tranquility of lakeside living with exceptional resort-style amenities, including private lake access, marina and boat launch, heated outdoor pool, fitness centre, clubhouse, walking trails, playgrounds, and beautifully maintained grounds. Whether you're boating, fishing, paddleboarding, snowmobiling, or simply enjoying breathtaking sunsets, every season offers something special. Create the lifestyle you've been dreaming of in a welcoming community where recreation, relaxation, and lake living come together. Your escape to Waters Edge starts here. (id:6769)

Listing Presented By:



Originally Listed by:  
The Foundry Real Estate Company  
Ltd

**RE/MAX ELITE**

**RE/MAX Elite Sherwood Park**

#116, 150 Chippewa Rd ,  
Edmonton, Alberta,

Phone: 780-984-9399

Fax:

steveleddy@hotmail.com

The property information on this website is derived from the Canadian Real Estate Association's Data Distribution Facility (DDF®). DDF® references real estate listings held by various brokerage firms and franchisees. The accuracy of information is not guaranteed and should be independently verified. The trademarks REALTOR®, REALTORS® and the REALTOR® logo are controlled by The Canadian Real Estate Association (CREA) and identify real estate professionals who are members of CREA. The trademarks MLS®, Multiple Listing Service® and the associated logos are owned by CREA and identify the quality of services provided by real estate professionals who are members of CREA.