



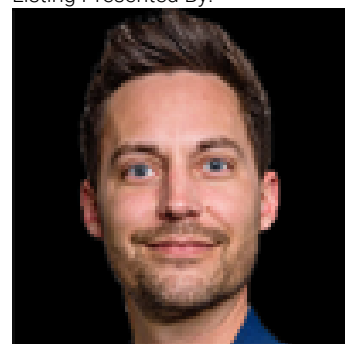
Edmonton Alberta

\$299,900

Welcome to this fantastic CORNER UNIT Townhouse located in Silver Berry. The home is across the road from shopping, steps from public transportation, schools and lots of street parking, perfect for first-time buyers or investors. Home offers 3 bedrooms and a single attached oversized garage with a SEPARATE ENTRY DOOR to the basement. The main floor offers a spacious living area, big sunny windows, a convenient half bath with laundry, dining area and well designed kitchen with plenty of counter space. Upstairs you will find 3 bedrooms, walkout closet and full washroom. Enjoy summer BBQ on your private back deck and fully fenced backyard. The unfinished basement offers endless potential with big windows and space for future development. Don't miss this amazing opportunity. (id:6769)

Living room 3.91 m x Measurements not available Primary Bedroom 3.55 m x Measurements not available
Dining room 2.36 m x Measurements not available available
Kitchen 3.02 m x Measurements not available Bedroom 2 2.78 m x Measurements not available
Bedroom 3 2.44 m x Measurements not available

Listing Presented By:



Originally Listed by:
Century 21 Smart Realty

<https://realtorharpalgill.c21.ca/>



RE/MAX Elite Sherwood Park

#116, 150 Chippewa Rd,
Edmonton, Alberta,

Phone: 780-984-9399

Fax:

steveleddy@hotmail.com

The property information on this website is derived from the Canadian Real Estate Association's Data Distribution Facility (DDF®). DDF® references real estate listings held by various brokerage firms and franchisees. The accuracy of information is not guaranteed and should be independently verified. The trademarks REALTOR®, REALTORS® and the REALTOR® logo are controlled by The Canadian Real Estate Association (CREA) and identify real estate professionals who are members of CREA. The trademarks MLS®, Multiple Listing Service® and the associated logos are owned by CREA and identify the quality of services provided by real estate professionals who are members of CREA.