



Edmonton Alberta

\$549,900

Beautifully maintained family home in the desirable community of Hollick-Kenyon featuring an open-concept layout with soaring vaulted ceilings and bright, spacious living areas. The kitchen offers a walk-in pantry and patio access to a large deck overlooking the fully fenced, private backyard. With 4 bedrooms, a 32-ft playroom, 2 full bathrooms, and a finished laundry room, this home offers plenty of space for the whole family. The primary suite includes a walk-in closet and a relaxing ensuite with a jetted tub. Recent upgrades include brand-new shingles and a brand-new hot water tank. Complete with a double attached garage and situated on a quiet cul-de-sac, just minutes from Anthony Henday Drive, Manning Drive, schools, parks, and shopping. (id:6769)

Family room Measurements not available

Bedroom 4 Measurements not available

Living room Measurements not available

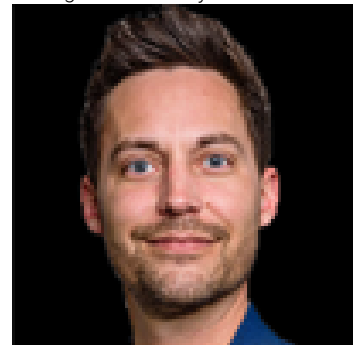
Kitchen Measurements not available

Primary Bedroom Measurements not available

Bedroom 2 Measurements not available

Bedroom 3 Measurements not available

Listing Presented By:



Originally Listed by:
Homes & Gardens Real Estate
Limited

RE/MAX ELITE

RE/MAX Elite Sherwood Park

#116, 150 Chippewa Rd ,
Edmonton, Alberta,

Phone: 780-984-9399

Fax:

steveleddy@hotmail.com

The property information on this website is derived from the Canadian Real Estate Association's Data Distribution Facility (DDF®). DDF® references real estate listings held by various brokerage firms and franchisees. The accuracy of information is not guaranteed and should be independently verified. The trademarks REALTOR®, REALTORS® and the REALTOR® logo are controlled by The Canadian Real Estate Association (CREA) and identify real estate professionals who are members of CREA. The trademarks MLS®, Multiple Listing Service® and the associated logos are owned by CREA and identify the quality of services provided by real estate professionals who are members of CREA.