

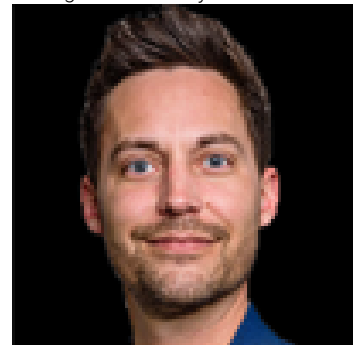


52025 RGE RD 12 Rural Parkland County AB

\$499,900

Nestled on 3.35 acres, this spacious home has been a cherished part of the family for years. Lovingly maintained, it exudes a sense of pride of ownership! With 1500 sq ft, 3 bedrooms, and 2 bathrooms, this cozy abode invites you to create your own memories. The delightful 3-season sunroom beckons, offering a serene space to enjoy the changing seasons. As you drive down the tree-lined driveway, you'll feel the connection to the land. The outbuildings--a barn, a pump house/woodworking shop, and additional sheds--tell stories of hard work, creativity, and self-sufficiency. The double detached garage is a hub for tinkering, and dreams. And that huge garden? It's a canvas for your green thumb. Privacy surrounds you, yet convenience is at your doorstep. Minutes from the highway, you can easily reach Spruce Grove, Edmonton, and the airport. The newer windows, siding front & back deck add to the homes charm, while the spacious master ensures your personal retreat. This home is a legacy waiting for it's next chapter!

Listing Presented By:



Originally Listed by:
Exp Realty

angela@AngelaDebloisRealty.com
<https://buildrealestate.ca/>

RE/MAX ELITE

RE/MAX Elite Sherwood Park

#116, 150 Chippewa Rd ,
Edmonton, Alberta,

Phone: 780-984-9399

Fax:

steveleddy@hotmail.com