



Edmonton Alberta

\$429,900

Unbelievable bright and cheery Charlesworth single family detached home is LOADED! Granite in the espresso kitchen, upgraded stainless steel appliances, hardwood throughout the main level, NEW blue tooth compatible steam shower with modern barn door with epoxy floor in the lower level plus media room fully equipped with built in surround sound KEF speakers, even on the ceiling. Backyard is fully fenced with a dog run, two tiered deck, storage shed and 21x19ft double garage with alley access. NEW SHINGLES! CENTRAL AIR CONDITIONING! TANKLESS HOT WATER! This gem is a quick walking distance to shopping and schools.

(id:6769)

Computer Room 9.2 m X 9 m

Media 8 m X 14 m

Living room 11.2 m X 12 m

Dining room Measurements not available

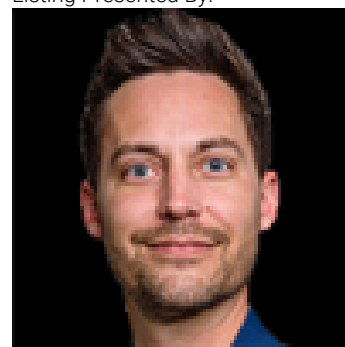
Kitchen 9 m X 11 m

Primary Bedroom 10.01 m X 12.1 m

Bedroom 2 9.04 m X 10.09 m

Bedroom 3 9.01 m X 9.04 m

Listing Presented By:



Originally Listed by:
NOW Real Estate Group

<http://www.kerimctaggart.com/>

RE/MAX ELITE

RE/MAX Elite Sherwood Park

#116, 150 Chippewa Rd ,
Edmonton, Alberta,

Phone: 780-984-9399

Fax:

steveleddy@hotmail.com

The property information on this website is derived from the Canadian Real Estate Association's Data Distribution Facility (DDF®). DDF® references real estate listings held by various brokerage firms and franchisees. The accuracy of information is not guaranteed and should be independently verified. The trademarks REALTOR®, REALTORS® and the REALTOR® logo are controlled by The Canadian Real Estate Association (CREA) and identify real estate professionals who are members of CREA. The trademarks MLS®, Multiple Listing Service® and the associated logos are owned by CREA and identify the quality of services provided by real estate professionals who are members of CREA.