



## Spruce Grove Alberta

\$424,900

A brand new duplex in the beautiful community of Prescott. At nearly 1,600 sq ft, this contemporary home with a front double attached garage is thoughtfully designed for modern living. The main level features a stylish L-shaped kitchen with all appliances included, a walk-through pantry, and an open dining and living area that opens to a deck backing onto a rear walkway--no direct rear neighbours. Upstairs, you'll find two well-sized bedrooms, a versatile bonus room, and convenient upper-floor laundry. The spacious primary retreat is complete with a 5-piece ensuite. A separate side entrance adds excellent potential for a future legal suite or multi-generational living. (id:6769)

Living room Measurements not available

Dining room Measurements not available

Kitchen Measurements not available

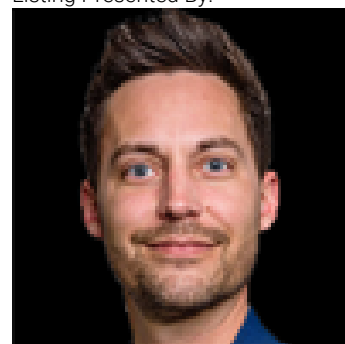
Primary Bedroom Measurements not available

Bedroom 2 Measurements not available

Bedroom 3 Measurements not available

Bonus Room Measurements not available

Listing Presented By:



Originally Listed by:  
Exp Realty



**RE/MAX Elite Sherwood Park**

#116, 150 Chippewa Rd ,  
Edmonton, Alberta,

Phone: 780-984-9399

Fax:

steveleddy@hotmail.com

The property information on this website is derived from the Canadian Real Estate Association's Data Distribution Facility (DDF®). DDF® references real estate listings held by various brokerage firms and franchisees. The accuracy of information is not guaranteed and should be independently verified. The trademarks REALTOR®, REALTORS® and the REALTOR® logo are controlled by The Canadian Real Estate Association (CREA) and identify real estate professionals who are members of CREA. The trademarks MLS®, Multiple Listing Service® and the associated logos are owned by CREA and identify the quality of services provided by real estate professionals who are members of CREA.