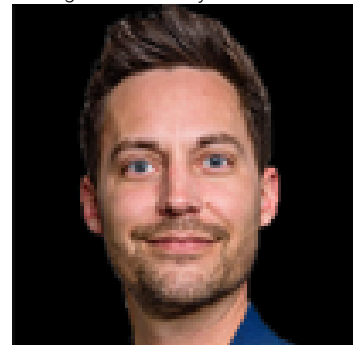


Edmonton Alberta

\$38

Commercial retail units (5385, 5387 and 3589 Edgemont Boulevard NW) are in a standalone building (Building 4) in 38,000 sf plus retail plaza (Royal Centre Edgemont). Building 4 is appx. 3535 square Feet, gross leasable and can be leased together or units 5385 and 5389 can be leased separately. The Plaza has high exposure and easy access to and from 215 Street and Edgemont Boulevard with midrise apartment buildings/single family homes around. Development is in rapidly growing West Corridor of the city and in affluent Edgemont community. This Plaza has high density neighborhood on North, South and East and Winterburn Road on West. The location is walking distance to nearby School and, Park. Existing major businesses in the plaza are- Medical Clinic and Pharmacy, General Dentist, Day Care, Liquor Store, Martial Art and couple of restaurants/QSR. Location is suitable for businesses seeking high foot and, vehicular traffic and ideal for Physiotherapist, Chiro proctor, Optometrist, Psychology/Counselling, Specialized Medical Practice, Veterinary Clinic, Pre-School, Tutoring Centre, Yoga and Fitness Studio, Financial Services (Insurance, Financial Planner, Bank), Nail Salon, Spa, Hair Salon, Restaurant/QSR, Neighborhood Pub and Beverage business and Convenience store etc. lease contact agent for additional information. (id:6769)

Listing Presented By:



Originally Listed by:
RE/MAX Excellence



RE/MAX Elite Sherwood Park

#116, 150 Chippewa Rd ,
Edmonton, Alberta,

Phone: 780-984-9399

Fax:

steveleddy@hotmail.com

The property information on this website is derived from the Canadian Real Estate Association's Data Distribution Facility (DDF®). DDF® references real estate listings held by various brokerage firms and franchisees. The accuracy of information is not guaranteed and should be independently verified. The trademarks REALTOR®, REALTORS® and the REALTOR® logo are controlled by The Canadian Real Estate Association (CREA) and identify real estate professionals who are members of CREA. The trademarks MLS®, Multiple Listing Service® and the associated logos are owned by CREA and identify the quality of services provided by real estate professionals who are members of CREA.