



## Sherwood Park Alberta

\$819,998

Refined, stylish, and effortlessly functional—welcome to this beautifully upgraded home in Summerwood. Step inside to soaring ceilings & new vinyl plank floors. The chef's kitchen is the heart of the home, featuring double islands, granite counters, SS appliances, & a walk-through pantry. The living room is filled w/ natural light and anchored by a gas FP. A front office offers a quiet space to work or unwind. Upstairs, you'll find a cozy bonus room & a standout primary suite behind French doors—complete w/ a refreshment bar, soaker tub, glass shower, dual vanities, & a walk-in closet. The fully finished basement offers a large rec room w/ a feature wall, wet bar, 4th bedroom, & full bath. The backyard is a private oasis—fully landscaped, low maintenance, south facing & finished w/ a composite deck. Additional upgrades include: new furnace (2023), A/C (2023), HWT (2023), & fresh paint. Walkable to parks, trails, and all amenities—this is a home that truly stands out. (id:6769)

Bedroom 4 4.09 m X 2.51 m

Recreation room 9.11 m X 7.75 m

Living room 6.18 m X 3.75 m

Dining room 2.17 m X 3.65 m

Kitchen 5.59 m X 4.46 m

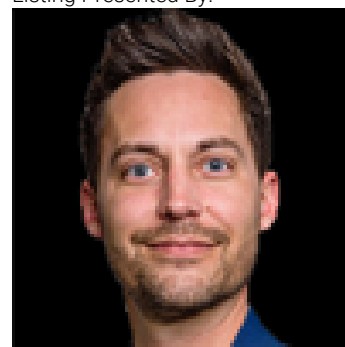
Primary Bedroom 5.16 m X 3.94 m

Bedroom 2 3.55 m X 3.14 m

Bedroom 3 3.55 m X 3.17 m

Bonus Room Measurements not available

Listing Presented By:



Originally Listed by:  
Royal LePage Prestige Realty

<http://www.smittysells.ca/>

**RE/MAX ELITE**

**RE/MAX Elite Sherwood Park**

#116, 150 Chippewa Rd ,  
Edmonton, Alberta,

Phone: 780-984-9399

Fax:

steveleddy@hotmail.com