



Sherwood Park Alberta

\$675,000

Welcome to Summerwood, Sherwood Park's favourite family community! This beautifully maintained, freshly painted 2,555 SQFT Pacesetter 2-story offers the perfect blend of style and function. Stunning chef's kitchen with granite countertops, new stainless steel appliances, huge island, and walk-through pantry. Bright dining area with coffered ceiling opens to a large family room with gas fireplace and hardwood floors. Stay cool with full A/C or entertain on the stamped concrete patio. Also features a large boot room off the garage which is perfect for busy families. Upstairs features a vaulted bonus room, 3 spacious bedrooms, and a large primary bedroom with California Closets and a 5 pc large spa ensuite with soaker tub, dual sinks, and full tile shower. Basement offers 9' ceilings, laundry and is ready for your personal touch. Ideally located with quick access in/out of Summerwood and steps to walking trails, parks and forested areas. (id:6769)

Living room Measurements not available x 6.7 m

Bedroom 2 Measurements not available x 3.2 m

Dining room Measurements not available x 3.6 m

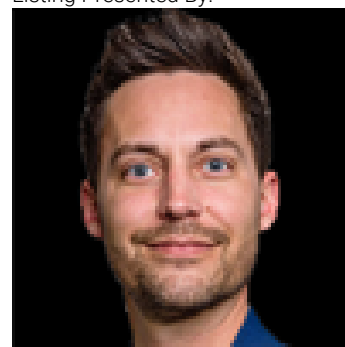
Bedroom 3 Measurements not available x 3.3 m

Kitchen Measurements not available x 5.1 m

Bonus Room Measurements not available x 5 m

Primary Bedroom Measurements not available x 5 m

Listing Presented By:



Originally Listed by:
Royal LePage Prestige Realty

RE/MAX ELITE

RE/MAX Elite Sherwood Park

#116, 150 Chippewa Rd ,
Edmonton, Alberta,

Phone: 780-984-9399

Fax:

steveleddy@hotmail.com

The property information on this website is derived from the Canadian Real Estate Association's Data Distribution Facility (DDF®). DDF® references real estate listings held by various brokerage firms and franchisees. The accuracy of information is not guaranteed and should be independently verified. The trademarks REALTOR®, REALTORS® and the REALTOR® logo are controlled by The Canadian Real Estate Association (CREA) and identify real estate professionals who are members of CREA. The trademarks MLS®, Multiple Listing Service® and the associated logos are owned by CREA and identify the quality of services provided by real estate professionals who are members of CREA.