

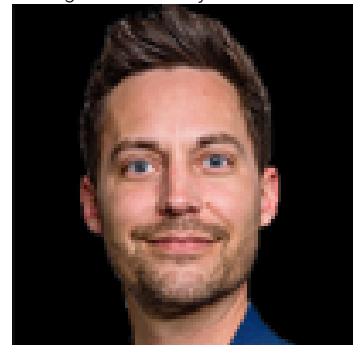


Rural Lac Ste Anne County Alberta

\$269,000

Fantastic opportunity to own a private country property directly across the road from Oldman Lake in Lac Ste. Anne County. This 39.78 acre parcel offers endless potential as a recreational retreat, weekend getaway, or future hobby farm. The existing older house and bunkhouse are uninhabitable and are being sold as-is, where-is. A 20' x 40' Quonset, approximately 13 years old, provides excellent storage for equipment, recreational vehicles, or hobby farm needs. Power is already on site, and the property is serviced with a septic pump-out system. Enjoy the peaceful rural setting, abundant wildlife, and easy access to outdoor recreation at nearby Oldman Lake. Whether you're looking for a place to camp, store your toys, build your country home, or develop a small hobby farm, this property offers exceptional value and future potential. Adjacent 39.78-acre parcel & parcel fronting the lake are also available for purchase, offering a rare opportunity to expand your land holdings and own all three properties. (id:6769)

Listing Presented By:



Originally Listed by:
RE/MAX Real Estate

<http://www.thesoldsisters.ca/>



RE/MAX Elite Sherwood Park

#116, 150 Chippewa Rd ,
Edmonton, Alberta,

Phone: 780-984-9399

Fax:

steveleddy@hotmail.com

The property information on this website is derived from the Canadian Real Estate Association's Data Distribution Facility (DDF®). DDF® references real estate listings held by various brokerage firms and franchisees. The accuracy of information is not guaranteed and should be independently verified. The trademarks REALTOR®, REALTORS® and the REALTOR® logo are controlled by The Canadian Real Estate Association (CREA) and identify real estate professionals who are members of CREA. The trademarks MLS®, Multiple Listing Service® and the associated logos are owned by CREA and identify the quality of services provided by real estate professionals who are members of CREA.