



Rural Parkland County Alberta

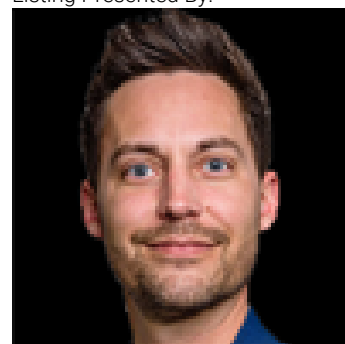
\$295,000

Your dream escape awaits at Trestle Creek Golf Resort! Welcome to this charming 3 season park model with the potential to convert into a 4 season getaway! Fully equipped and thoughtfully laid out, this cozy retreat features 2 bedroom, 1 bathroom, and everything you need for a comfortable seasonal living. This move in ready unit offers the perfect blend of comfort and adventure. Step inside to find a bright, open concept living space with large windows, modern finishes, and everything you need to unwind. The primary bedroom features built-in storage, and the second bedroom is ideal for guests or family members. Enjoy the spacious deck for morning coffee or evening BBQs, and take advantage of the beautiful lot that backs onto a lush green area. Located in a gated resort community, you'll have access to world-class amenities including a 27-hole golf course, water slides, beach, wakeboard cable park, sports courts, and more! Let your adventures start NOW! (id:6769)

Primary Bedroom Measurements not available

Bedroom 2 Measurements not available

Listing Presented By:



Originally Listed by:
Initia Real Estate

<https://linktr.ee/karamoskrealty>

RE/MAX ELITE

RE/MAX Elite Sherwood Park

#116, 150 Chippewa Rd ,
Edmonton, Alberta,

Phone: 780-984-9399

Fax:

steveleddy@hotmail.com

The property information on this website is derived from the Canadian Real Estate Association's Data Distribution Facility (DDF®). DDF® references real estate listings held by various brokerage firms and franchisees. The accuracy of information is not guaranteed and should be independently verified. The trademarks REALTOR®, REALTORS® and the REALTOR® logo are controlled by The Canadian Real Estate Association (CREA) and identify real estate professionals who are members of CREA. The trademarks MLS®, Multiple Listing Service® and the associated logos are owned by CREA and identify the quality of services provided by real estate professionals who are members of CREA.