



# Leduc Alberta

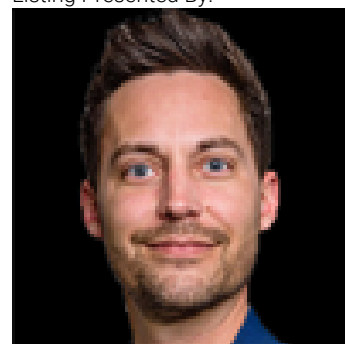
\$574,900

Impressive two story 28 regular lot located in Robinson, floor plan boasts 1,860 SQ FT living area. 9' ceilings for both the main floor and basement. Main floor finish with laminate flooring throughout, while the second floor is finished with carpet. Modern kitchen with quartz counter tops. Main floor also feature a useful den as while for your needs. All lights through out the house lit using LED lights/ bulbs. The second floor features three bedrooms including the primary bedroom which comes with a 5 piece en suite. Along with a 4 piece main bathroom for the two other bedrooms and bonus room. Fully land scaped, Central air condition system, all the appliances and window covering included. The basement is unfinished with separate entrance allowing for a legal rental suite in the future. (id:6769)

Living room Measurements not available  
Dining room Measurements not available  
Kitchen Measurements not available  
Den Measurements not available

Primary Bedroom Measurements not available  
Bedroom 2 Measurements not available  
Bedroom 3 Measurements not available  
Bonus Room Measurements not available

Listing Presented By:



Originally Listed by:  
Initia Real Estate

**RE/MAX ELITE**

**RE/MAX Elite Sherwood Park**

#116, 150 Chippewa Rd ,  
Edmonton, Alberta,

Phone: 780-984-9399  
Fax:  
steveledddy@hotmail.com