

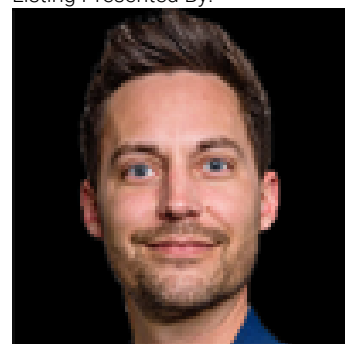


58512 RR 150 Rural Smoky Lake County AB

\$469,900

Discover the epitome of privacy with this traditional country home, situated on 79 acres of classic Alberta back country, featuring a charming wrap-around veranda, creating a warm & inviting atmosphere. Inside, the kitchen is equipped with an island & opens up to the dining room, making entertaining effortless. The cozy living room is anchored by a corner wood stove, ideal for chilly winter evenings. Upstairs, the loft has been transformed into a master retreat complete with a sitting area, a 3-piece bathroom, and the primary bedroom, offering a serene escape. The main floor includes a full bath and two additional bedrooms. The basement is fully finished with 2 extra bedrooms, another bathroom, and a family area, providing ample space for family and friends. Outside, the property boasts a 30x40 shop with power and a concrete floor, perfect for a hobby farm or workshop. This home is a true sanctuary, offering a retreat from the hustle & bustle of city life and immersing you in nature at its finest.

Listing Presented By:



Originally Listed by:
Century 21 Poirier Real Estate

tyler.poirier@century21.ca
<http://www.century21poirier.com>

RE/MAX ELITE

RE/MAX Elite Sherwood Park

#116, 150 Chippewa Rd ,
Edmonton, Alberta,

Phone: 780-984-9399

Fax:

steveleddy@hotmail.com