



Beaumont Alberta

\$623,900

Welcome to this stunning two-storey 3-bedroom home with a large bonus room, ideally located on a quiet cul-de-sac—perfect for families seeking privacy and a peaceful setting. The well-designed layout offers comfort, space, and functionality throughout. The primary bedroom serves as a private retreat, featuring a walk-in closet and a spacious ensuite complete with heated flooring and a relaxing deep soaker tub. The additional bedrooms are versatile for family, guests, or a home office. At the heart of the home is the open, bright kitchen with a gas stove and a highly desirable walk-through pantry, seamlessly flowing into the main living area, ideal for entertaining and everyday living. Step outside to a fully fenced backyard designed for both relaxation and enjoyment, featuring an extra large composite deck with a pergola, a hot tub, and raised planters along the back fence - a perfect outdoor oasis. Completing the home is a spacious double attached garage, offering ample room for vehicles and storage. (id:6769)

Living room 3.64 m X 4.7 m

Dining room 3.65 m X 2.73 m

Kitchen 4.58 m X 4.3 m

Family room Measurements not available

Breakfast 3.08 m X 2.78 m

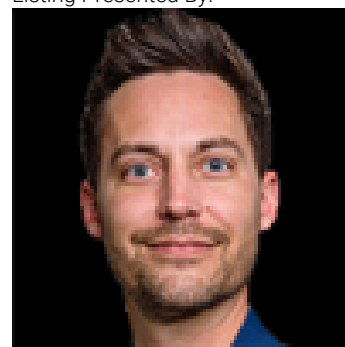
Primary Bedroom 5.83 X 4.57

Bedroom 2 4.82 m X 3.1 m

Bedroom 3 3.8 m X 3.49 m

Bonus Room 5.33 m X 5.78 m

Listing Presented By:



Originally Listed by:
Esquire Realty Inc

RE/MAX ELITE

RE/MAX Elite Sherwood Park

#116, 150 Chippewa Rd ,
Edmonton, Alberta,

Phone: 780-984-9399

Fax:

steveleddy@hotmail.com

The property information on this website is derived from the Canadian Real Estate Association's Data Distribution Facility (DDF®). DDF® references real estate listings held by various brokerage firms and franchisees. The accuracy of information is not guaranteed and should be independently verified. The trademarks REALTOR®, REALTORS® and the REALTOR® logo are controlled by The Canadian Real Estate Association (CREA) and identify real estate professionals who are members of CREA. The trademarks MLS®, Multiple Listing Service® and the associated logos are owned by CREA and identify the quality of services provided by real estate professionals who are members of CREA.