



## Edmonton Alberta

\$519,000

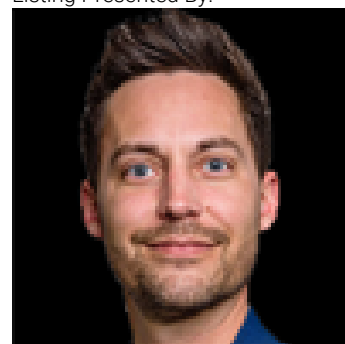
This spacious two-story home in Ellerslie is great for the whole family! The main floor features hardwood flooring throughout and a cozy gas fireplace with a classic white mantel, creating a functional living space with room to make it your own. Granite countertop, large pantry, main-floor laundry and mud room with storage are also some of the features of this space. Large windows bring in plenty of natural light and look out over a generous backyard with an amazing deck for entertaining. Upstairs offers a spacious primary with walk-in closet and 2 additional large bedrooms. The fully finished basement includes a dedicated theatre/media room with plush carpet, wainscoting detail, recessed lighting, dry bar and built-in surround sound. With four bathrooms and a finished basement, this home offers excellent value and space for the family. A solid opportunity in a sought-after Ellerslie location! (id:6769)

Primary Bedroom Measurements not available

Bedroom 3 Measurements not available

Bedroom 2 Measurements not available

Listing Presented By:



Originally Listed by:  
Century 21 Masters

**RE/MAX ELITE**

**RE/MAX Elite Sherwood Park**

#116, 150 Chippewa Rd ,  
Edmonton, Alberta,

Phone: 780-984-9399

Fax:

steveleddy@hotmail.com

The property information on this website is derived from the Canadian Real Estate Association's Data Distribution Facility (DDF®). DDF® references real estate listings held by various brokerage firms and franchisees. The accuracy of information is not guaranteed and should be independently verified. The trademarks REALTOR®, REALTORS® and the REALTOR® logo are controlled by The Canadian Real Estate Association (CREA) and identify real estate professionals who are members of CREA. The trademarks MLS®, Multiple Listing Service® and the associated logos are owned by CREA and identify the quality of services provided by real estate professionals who are members of CREA.