



## Edmonton Alberta

\$148,000

This 3 bedroom townhome is located within the well maintained complex of Norshire Gardens and has excellent access to nearby school, bus and major shopping. Excellent home for first time buyer or investor.

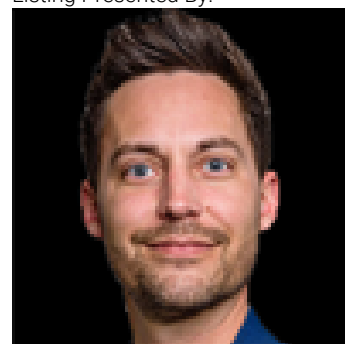
(id:6769)

Bedroom 3 Measurements not available

Bedroom 2 Measurements not available

Primary Bedroom Measurements not available

Listing Presented By:



Originally Listed by:  
MaxWell Challenge Realty

**RE/MAX ELITE**

**RE/MAX Elite Sherwood Park**

#116, 150 Chippewa Rd ,  
Edmonton, Alberta,

Phone: 780-984-9399

Fax:

steveleddy@hotmail.com

The property information on this website is derived from the Canadian Real Estate Association's Data Distribution Facility (DDF®). DDF® references real estate listings held by various brokerage firms and franchisees. The accuracy of information is not guaranteed and should be independently verified. The trademarks REALTOR®, REALTORS® and the REALTOR® logo are controlled by The Canadian Real Estate Association (CREA) and identify real estate professionals who are members of CREA. The trademarks MLS®, Multiple Listing Service® and the associated logos are owned by CREA and identify the quality of services provided by real estate professionals who are members of CREA.