



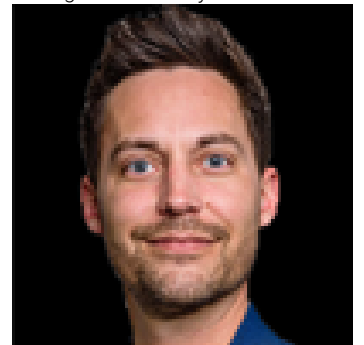
Edmonton Alberta

\$168,500

Welcome to the perfect blend of affordability, lifestyle & location just steps from Edmonton's iconic river valley trails, cafes, transit, and city life. Whether you're a first-time buyer, student or investor this move-in ready condo checks every box. Inside, you'll find a bright and functional layout designed for easy living, complete with all furniture, dishware, blinds and essentials included in price-- making this a truly turnkey opportunity. Just bring your suitcase and move in! The student-friendly building offers incredible amenities including a fitness centre, social room, and heated underground parking for year-round convenience. Low-maintenance living meets unbeatable value in a location perfect for professionals, university students, downtown commuters, or savvy investors looking to generate rental income. (id:6769)

Primary Bedroom Measurements not available

Listing Presented By:



Originally Listed by:
Exp Realty

RE/MAX ELITE

RE/MAX Elite Sherwood Park

#116, 150 Chippewa Rd ,
Edmonton, Alberta,

Phone: 780-984-9399

Fax:

steveleddy@hotmail.com

The property information on this website is derived from the Canadian Real Estate Association's Data Distribution Facility (DDF®). DDF® references real estate listings held by various brokerage firms and franchisees. The accuracy of information is not guaranteed and should be independently verified. The trademarks REALTOR®, REALTORS® and the REALTOR® logo are controlled by The Canadian Real Estate Association (CREA) and identify real estate professionals who are members of CREA. The trademarks MLS®, Multiple Listing Service® and the associated logos are owned by CREA and identify the quality of services provided by real estate professionals who are members of CREA.