



Edmonton Alberta

\$158,000

Immediate possession available in this bright and spacious 2-bedroom, 2-bathroom suite in Capital Centre! (907 sq ft.) Fantastic location directly across from Save-On-Foods and just steps to the LRT for easy commuting. Features include in-suite laundry, laminate flooring, a renovated balcony, and underground heated parking. Enjoy an exceptional lifestyle with outstanding building amenities including a large fitness centre, social hall, billiards, shuffleboard, and a variety of organized activities. Whether you're downsizing, investing, or buying your first home, this well-maintained suite offers comfort, convenience, and value. Pet Approval from Board. Easy to show and even easier to love! (id:6769)

Living room 4.9 m X 4.22 m

Dining room 3.7 m X 2.95 m

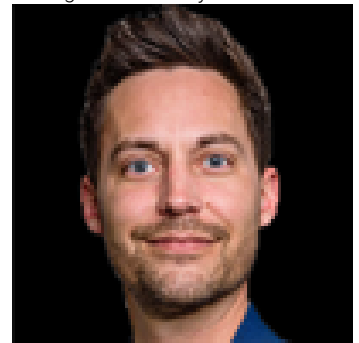
Kitchen 2.73 m X 2.34 m

Primary Bedroom 3.88 m X 3.66 m

Bedroom 2 3.88 m X 2.76 m

Laundry room 0.92 m X 0.9 m

Listing Presented By:



Originally Listed by:
RE/MAX Excellence

<http://www.glickandglick.com/>

RE/MAX ELITE

RE/MAX Elite Sherwood Park

#116, 150 Chippewa Rd ,
Edmonton, Alberta,

Phone: 780-984-9399

Fax:

steveleddy@hotmail.com

The property information on this website is derived from the Canadian Real Estate Association's Data Distribution Facility (DDF®). DDF® references real estate listings held by various brokerage firms and franchisees. The accuracy of information is not guaranteed and should be independently verified. The trademarks REALTOR®, REALTORS® and the REALTOR® logo are controlled by The Canadian Real Estate Association (CREA) and identify real estate professionals who are members of CREA. The trademarks MLS®, Multiple Listing Service® and the associated logos are owned by CREA and identify the quality of services provided by real estate professionals who are members of CREA.