



Edmonton Alberta

\$232,500

Live in the heart of downtown in The Omega, where vibrant city living meets comfort and style. This extensively renovated 2 bedroom, 2 bathroom condo boasts 9 foot ceilings, fresh paint, and brand new laminate flooring throughout. The bright open concept living space offers direct south exposure and a balcony overlooking a park, perfect for enjoying the energy of the city. The kitchen includes stainless steel appliances and a pantry for added storage. The primary bedroom features a three-piece ensuite, while the second bedroom offers a walk-through closet to a 4 piece bath. Additional highlights include in-suite laundry and one heated underground parking stall. Enjoy the fitness centre, secure key fob entry, and an unbeatable location steps to the LRT station, river valley, Rogers Place, dining, grocery, universities, the Legislature Grounds, and Edmonton's best cafes and restaurants. An excellent opportunity for first-time buyers, professionals, or investors in this prime location. (id:6769)

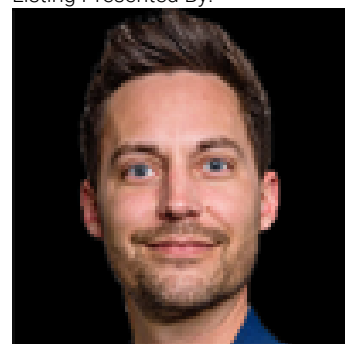
Living room 5.56 m X 3.96 m

Kitchen 3.69 m X 2.8 m

Primary Bedroom 3.17 m X 5.52 m

Bedroom 2 2.76 m X 3.26 m

Listing Presented By:



Originally Listed by:
Royal LePage Noralta Real Estate

<https://www.lorifrankhomes.ca/>

RE/MAX ELITE

RE/MAX Elite Sherwood Park

#116, 150 Chippewa Rd ,
Edmonton, Alberta,

Phone: 780-984-9399

Fax:

steveleddy@hotmail.com

The property information on this website is derived from the Canadian Real Estate Association's Data Distribution Facility (DDF®). DDF® references real estate listings held by various brokerage firms and franchisees. The accuracy of information is not guaranteed and should be independently verified. The trademarks REALTOR®, REALTORS® and the REALTOR® logo are controlled by The Canadian Real Estate Association (CREA) and identify real estate professionals who are members of CREA. The trademarks MLS®, Multiple Listing Service® and the associated logos are owned by CREA and identify the quality of services provided by real estate professionals who are members of CREA.