

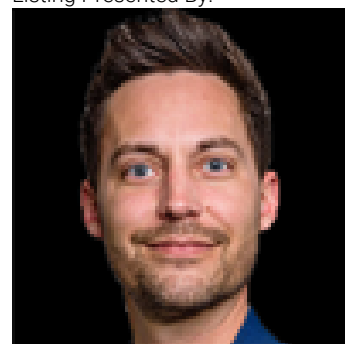


Edmonton Alberta

\$2,000

STUNNING RIVER VALLEY VIEWS | 2 BED, 2 BATH CONDO IN RIVER VISTA | AVAILABLE IMMEDIATELY
IMMACULATE & MODERN 1000 FT² CONDO in the heart of River Vista, just steps from the Legislative Grounds, LRT station, downtown, and Edmonton's breathtaking River Valley! * 2 Bedrooms / * 2 Bathrooms / * Central A/C / * Gas BBQ hookup on HUGE south-facing balcony / * Heated, secure underground parking / * Top-floor fitness/common room / * In-suite laundry / * Hardwood floors & stainless steel appliances / Enjoy a bright and open layout with large south-facing windows offering stunning river valley views. Ideal location for professionals or anyone looking for downtown living with nature at your doorstep. * Available Immediately / * \$2,000/month / * 18+ Age Restricted Building (id:6769)

Listing Presented By:



Originally Listed by:
Royal LePage Noralta Real Estate

<http://www.bayrack.com/>

RE/MAX ELITE

RE/MAX Elite Sherwood Park

#116, 150 Chippewa Rd ,
Edmonton, Alberta,

Phone: 780-984-9399

Fax:

steveleddy@hotmail.com

The property information on this website is derived from the Canadian Real Estate Association's Data Distribution Facility (DDF®). DDF® references real estate listings held by various brokerage firms and franchisees. The accuracy of information is not guaranteed and should be independently verified. The trademarks REALTOR®, REALTORS® and the REALTOR® logo are controlled by The Canadian Real Estate Association (CREA) and identify real estate professionals who are members of CREA. The trademarks MLS®, Multiple Listing Service® and the associated logos are owned by CREA and identify the quality of services provided by real estate professionals who are members of CREA.