



Edmonton Alberta

\$126,000

Located in the heart of downtown, this condo offers quick and convenient access to shopping, dining, nightlife, employment hubs, and all of Edmonton's major post-secondary institutions, NAIT, MacEwan, and the University of Alberta. The unit features modern updates, fresh paint, updated flooring, stainless-steel kitchen appliances and in-suite laundry. Unwind after a long day on your spacious 160 sq ft balcony with BBQ, where you can take in beautiful views of the tree-lined street. Enjoy the building's excellent amenities, including a sauna, fitness room, and social room. Just a 5-minute walk to the stunning River Valley and its extensive trail system, this location is perfect for an active lifestyle. The unit also includes a heated underground parking stall. Prefer transit? The Grandin LRT station is just one block away, and you're directly connected to downtown bike lanes. Condo fees include heat, water, and electricity. Don't miss this opportunity! (id:6769)

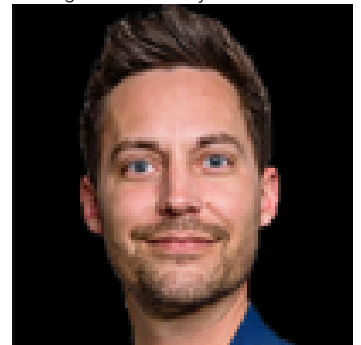
Living room 4.58 m X 3.46 m

Dining room 2.97 m X 2.69 m

Kitchen 2.36 m X 2.29 m

Primary Bedroom 3.5 m X 2.8 m

Listing Presented By:



Originally Listed by:
The Good Real Estate Company



RE/MAX Elite Sherwood Park

#116, 150 Chippewa Rd ,
Edmonton, Alberta,

Phone: 780-984-9399

Fax:

steveleddy@hotmail.com

The property information on this website is derived from the Canadian Real Estate Association's Data Distribution Facility (DDF®). DDF® references real estate listings held by various brokerage firms and franchisees. The accuracy of information is not guaranteed and should be independently verified. The trademarks REALTOR®, REALTORS® and the REALTOR® logo are controlled by The Canadian Real Estate Association (CREA) and identify real estate professionals who are members of CREA. The trademarks MLS®, Multiple Listing Service® and the associated logos are owned by CREA and identify the quality of services provided by real estate professionals who are members of CREA.