

Edmonton Alberta

\$171,000

Fully renovated 3-bedroom townhome in Parkridge Estates. This townhome has been completely updated with modern finishes and is move-in ready. The main floor features an open-concept layout connecting the living and dining areas to the updated kitchen. The kitchen includes white cabinetry, subway tile backsplash, quartz countertops, and stainless steel appliances. Upstairs you'll find three generously sized bedrooms with good closet space and natural light, plus a renovated full bathroom. Located near Rundle Park with quick access to golf, tennis, swimming, and scenic trails along the river valley. Minutes to shopping, schools, public transit, and major routes including Anthony Henday and Yellowhead Trail. Don't miss this opportunity to own a beautifully refreshed home ready for its next chapter! (id:6769)

Living room 5.2 m x Measurements not available

Dining room 2.5 m x Measurements not available

Kitchen 2.8 m x Measurements not available

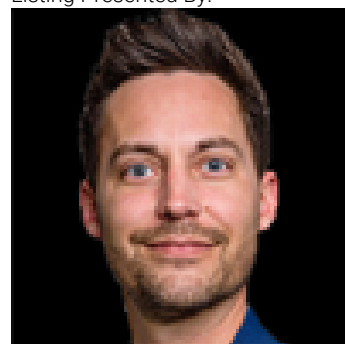
Primary Bedroom 2.9 m x Measurements not available

available

Bedroom 2 2.1 m x Measurements not available

Bedroom 3 2.1 m x Measurements not available

Listing Presented By:



Originally Listed by:
Century 21 Quantum Realty

<https://homeanalytics.ca/>

RE/MAX ELITE

RE/MAX Elite Sherwood Park

#116, 150 Chippewa Rd ,
Edmonton, Alberta,

Phone: 780-984-9399

Fax:

steveleddy@hotmail.com

The property information on this website is derived from the Canadian Real Estate Association's Data Distribution Facility (DDF®). DDF® references real estate listings held by various brokerage firms and franchisees. The accuracy of information is not guaranteed and should be independently verified. The trademarks REALTOR®, REALTORS® and the REALTOR® logo are controlled by The Canadian Real Estate Association (CREA) and identify real estate professionals who are members of CREA. The trademarks MLS®, Multiple Listing Service® and the associated logos are owned by CREA and identify the quality of services provided by real estate professionals who are members of CREA.