

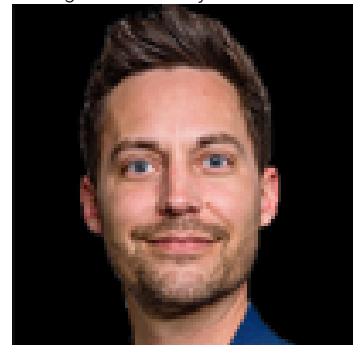


611 Lakeview Road Rural Athabasca County Alberta

\$634,900

Welcome to 611 Lakeview Rd, your opportunity to start enjoying lake life immediately. This fully furnished, turn-key lakefront property in the Summer Village of Bondiss at Skeleton Lake offers the rare advantage of two separate cabins on one beautifully landscaped lot, making it ideal for large families, multi-generational living, or friends looking to invest together while maintaining their own private spaces. Simply pack your clothes and groceries--everything else is ready and waiting for you to begin making memories at the lake. With breathtaking sunset views, a sandy beach area, and easy access to the water, this property is designed for relaxation, recreation, and entertaining. With over 1800 square feet of living space between both properties. The original 1 1/2 -storey cabin, built in the 1970s and extensively renovated in 2009, is filled with warmth and character. The vaulted-ceiling living room features a cozy gas fireplace and large windows that showcase stunning lake views. A main-floor bedroom and full bathroom offer convenience, while 2 additional bedrooms upstairs provide plenty of room for family and guests. Covered front and back decks allow you to enjoy your morning coffee or evening sunsets in comfort. The second cabin and garage complex, built in 2009, adds exceptional flexibility and living space. The main floor features a kitchen, bathroom, and direct access to the heated, finished garage complete with its own 2-piece bathroom and laundry area. Upstairs you'll find a spacious family room, two additional bedrooms plus a flex room. The generous primary suite boasts a walk in closet and a large ensuite featuring a relaxing jacuzzi tub--perfect for unwinding after a day on the lake. Pride of ownership is evident throughout this meticulously maintained property. Designed for low-maintenance enjoyment, it features metal roofs, an aggregate driveway,...

Listing Presented By:



Originally Listed by:
RE/MAX Connect

<http://www.kimshearsbailey.ca/>



RE/MAX Elite Sherwood Park

#116, 150 Chippewa Rd ,
Edmonton, Alberta,

Phone: 780-984-9399

Fax:

stevedddy@hotmail.com

3pc Bathroom .00 Ft x .00 Ft

Kitchen 17.67 Ft x 13.50 Ft

Bedroom 11.25 Ft x 10.00 Ft

3pc Bathroom .00 Ft x .00 Ft

Primary Bedroom 11.33 Ft x 13.42 Ft

Bedroom 9.42 Ft x 5.75 Ft

Living room 15.00 Ft x 14.00 Ft

Kitchen 11.50 Ft x 11.50 Ft

Living room 15.00 Ft x 14.00 Ft

Kitchen 11.50 Ft x 11.50 Ft

Living room 15.00 Ft x 14.00 Ft

Kitchen 11.50 Ft x 11.50 Ft

Living room 15.00 Ft x 14.00 Ft

Kitchen 11.50 Ft x 11.50 Ft

The property information on this website is derived from the Canadian Real Estate Association's Data Distribution Facility (DDF®). DDF® references real estate listings held by various brokerage firms and franchisees. The accuracy of information is not guaranteed and should be independently verified. The trademarks REALTOR®, REALTORS® and the REALTOR® logo are controlled by The Canadian Real Estate Association (CREA) and identify real estate professionals who are members of CREA. The trademarks RE/MAX®, Multiple Listing Service® and the associated logos are owned by CREA and identify the quality of services provided by real estate professionals who are members of CREA.

Other 11.33 Ft x 13.83 Ft

2pc Bathroom .00 Ft x .00 Ft

3pc Bathroom .00 Ft x .00 Ft

Living room 19.42 Ft x 15.75 Ft

Bedroom 6.08 Ft x 11.33 Ft

Primary Bedroom 9.67 Ft x 11.33 Ft