



Rural Leduc County Alberta

\$699,000

****LUXURY NEW BUILD**2 MASTER BEDROOM UPSTAIRS**MAIN FLOOR BED & FULL BATH**DOUBLE ATTACHED GARAGE**9 FT CEILINGS**** Welcome to this stunning brand new 2-storey home in the growing community of Irvine Creek, Rural Leduc County! Offering thoughtfully designed living space, this single-family home features a bright open-concept layout with modern finishes throughout. The main floor includes a spacious living area, stylish kitchen, dining space, plus a bedroom and full bath--perfect for guests or extended family. Upstairs offers 4 generous bedrooms including a luxurious primary suite with a 5-piece ensuite, additional baths, and convenient upper-floor laundry. Enjoy the double attached garage, 9 ft ceilings, vinyl plank flooring, and unbeatable access to shopping, Edmonton, and major routes. A perfect blend of comfort, style, and functionality! (id:6769)

Living room Measurements not available

Dining room Measurements not available

Kitchen Measurements not available

Bedroom 5 Measurements not available

Primary Bedroom Measurements not available

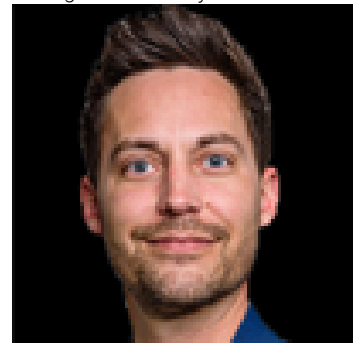
Bedroom 2 Measurements not available

Bedroom 3 Measurements not available

Bedroom 4 Measurements not available

Laundry room Measurements not available

Listing Presented By:



Originally Listed by:
Nationwide Realty Corp

RE/MAX ELITE

RE/MAX Elite Sherwood Park

#116, 150 Chippewa Rd ,
Edmonton, Alberta,

Phone: 780-984-9399

Fax:

steveleddy@hotmail.com

The property information on this website is derived from the Canadian Real Estate Association's Data Distribution Facility (DDF®). DDF® references real estate listings held by various brokerage firms and franchisees. The accuracy of information is not guaranteed and should be independently verified. The trademarks REALTOR®, REALTORS® and the REALTOR® logo are controlled by The Canadian Real Estate Association (CREA) and identify real estate professionals who are members of CREA. The trademarks MLS®, Multiple Listing Service® and the associated logos are owned by CREA and identify the quality of services provided by real estate professionals who are members of CREA.