



Edmonton Alberta

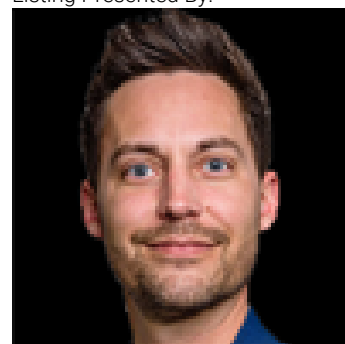
\$319,990

Welcome to this beautifully well kept bungalow ideally located close to public transit, shopping, schools, and all amenities. Perfect for first-time home buyers or those looking to downsize, this move-in ready home has seen numerous recent upgrades throughout over the years. The main floor features brand new flooring, fresh paint, updated trim and fixtures, electrical upgrades with 100 amp service, and a stunning well maintained kitchen complete with brand new stainless steel appliances. The fully finished basement offers a warm and inviting family room highlighted by a cozy wood stove and built-in bar area, making it the perfect space for entertaining family and friends. Outside, you'll find an oversized heated single garage featuring and a large yard is partially fenced with low-maintenance privacy chain link fencing and also includes a concrete RV/boat parking pad. This well-maintained home offers pride of ownership throughout. (id:6769)

Family room Measurements not available
Bedroom 3 Measurements not available
Living room Measurements not available
Dining room Measurements not available

Kitchen Measurements not available
Primary Bedroom Measurements not available
Bedroom 2 Measurements not available

Listing Presented By:



Originally Listed by:
Royal Lepage Arteam Realty

<http://www.wallykarout.com/>

RE/MAX ELITE

RE/MAX Elite Sherwood Park

#116, 150 Chippewa Rd ,
Edmonton, Alberta,

Phone: 780-984-9399

Fax:

steveleddy@hotmail.com

The property information on this website is derived from the Canadian Real Estate Association's Data Distribution Facility (DDF®). DDF® references real estate listings held by various brokerage firms and franchisees. The accuracy of information is not guaranteed and should be independently verified. The trademarks REALTOR®, REALTORS® and the REALTOR® logo are controlled by The Canadian Real Estate Association (CREA) and identify real estate professionals who are members of CREA. The trademarks MLS®, Multiple Listing Service® and the associated logos are owned by CREA and identify the quality of services provided by real estate professionals who are members of CREA.