



Edmonton Alberta

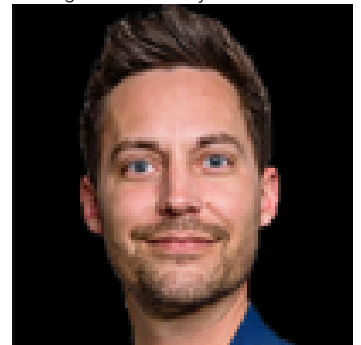
\$598,800

Lavish hm w/quiet luxury! Award-winning design in DESIRED comm. of Edgemont! Approx. 2180 sq.ft. AG, this stunning hm offers style & comfort throughout. Open flr plan c/w ceramic & gleaming Eng H/W, 9' ceilings, GREAT RM w/gas FP & gourmet kit w/exotic cabinets to ceiling, white quartz, lrg island/eating bar, gas range w/SS hood, BI microwave, loads of drawers & WALK-THRU pantry from gar. Upper lvl offers desk nook, lrg BONUS RM w/big windows, laundry, 3 bdrms & 2 full baths. Gorgeous primary ensuite w/HTD flrs, lrg tiled shower & soaker tub, dual sinks & HUGE W/I closet. Bsmt c/w 9' ceilings, great layout, plumbing roughed-in & elec wired. A/C! Steps to comm. lake, walking/biking trails, transit & quick access to Henday & Whitemud. STOP WAITING - START LIVING! (id:6769)

- Living room Measurements not available
- Dining room Measurements not available
- Kitchen Measurements not available
- Primary Bedroom Measurements not available

- Bedroom 2 Measurements not available
- Bedroom 3 Measurements not available
- Bonus Room Measurements not available

Listing Presented By:



Originally Listed by:
RE/MAX Excellence

<http://www.sidyar.com/>



RE/MAX Elite Sherwood Park

#116, 150 Chippewa Rd ,
Edmonton, Alberta,

Phone: 780-984-9399
Fax:
steveleddy@hotmail.com

The property information on this website is derived from the Canadian Real Estate Association's Data Distribution Facility (DDF®). DDF® references real estate listings held by various brokerage firms and franchisees. The accuracy of information is not guaranteed and should be independently verified. The trademarks REALTOR®, REALTORS® and the REALTOR® logo are controlled by The Canadian Real Estate Association (CREA) and identify real estate professionals who are members of CREA. The trademarks MLS®, Multiple Listing Service® and the associated logos are owned by CREA and identify the quality of services provided by real estate professionals who are members of CREA.