



Edmonton Alberta

\$539,000

Well maintained and upgraded, this McConachie 2-storey home offers 1765 sq ft above grade with a *MAIN-FLOOR BEDROOM and FULL BATH, plus a FINISHED BASEMENT with SEPARATE SIDE ENTRANCE for flexible living. The open main level is anchored by a striking feature wall and fireplace, complemented by bright living spaces, an upstairs bonus room, and a spacious primary suite with 5-piece ensuite. Finished with a landscaped yard, deck, double detached garage, and convenient access to schools, shopping, transit, and Anthony Henday. (id:6769)

Bedroom 5 Measurements not available

Second Kitchen Measurements not available

Living room Measurements not available

Dining room Measurements not available

Kitchen Measurements not available

Bedroom 4 Measurements not available

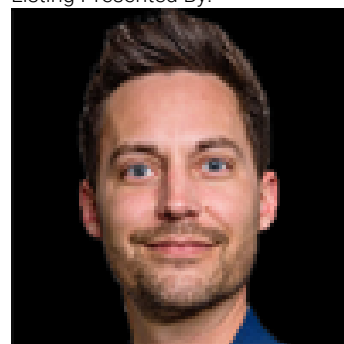
Primary Bedroom Measurements not available

Bedroom 2 Measurements not available

Bedroom 3 Measurements not available

Bonus Room Measurements not available

Listing Presented By:



Originally Listed by:
Royal LePage Noralta Real Estate



RE/MAX Elite Sherwood Park

#116, 150 Chippewa Rd ,
Edmonton, Alberta,

Phone: 780-984-9399

Fax:

steveledddy@hotmail.com

The property information on this website is derived from the Canadian Real Estate Association's Data Distribution Facility (DDF®). DDF® references real estate listings held by various brokerage firms and franchisees. The accuracy of information is not guaranteed and should be independently verified. The trademarks REALTOR®, REALTORS® and the REALTOR® logo are controlled by The Canadian Real Estate Association (CREA) and identify real estate professionals who are members of CREA. The trademarks MLS®, Multiple Listing Service® and the associated logos are owned by CREA and identify the quality of services provided by real estate professionals who are members of CREA.