



## Edmonton Alberta

\$499,900

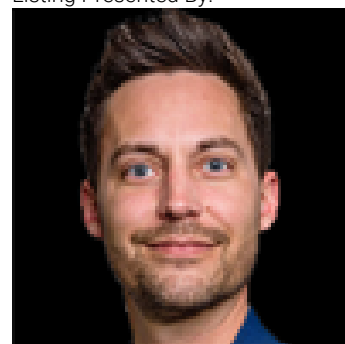
Beautifully maintained and truly move-in ready, this 3-bedroom, 3-bathroom home showcases comfort, functionality, and pride of ownership throughout. The open-concept floor plan offers bright, inviting living spaces complemented by central air conditioning and a fully finished basement, providing exceptional versatility for everyday living and entertaining. The oversized heated garage easily accommodates a truck and car, with additional space for storage or a workshop—perfect for year-round use. Outside, enjoy thoughtfully designed, low-maintenance landscaping that allows more time to relax and enjoy your surroundings. Inside, a well-appointed kitchen, generously sized bedrooms, and tasteful finishes create a warm and welcoming atmosphere. Ideally situated in a quiet, family-friendly neighborhood close to schools, parks, shopping, and transit, this home delivers an outstanding combination of comfort, convenience, and quality. A fantastic opportunity not to be missed. (id:6769)

Primary Bedroom Measurements not available

Bedroom 3 Measurements not available

Bedroom 2 Measurements not available

Listing Presented By:



Originally Listed by:  
Exp Realty

**RE/MAX ELITE**

**RE/MAX Elite Sherwood Park**

#116, 150 Chippewa Rd ,  
Edmonton, Alberta,

Phone: 780-984-9399

Fax:

steveleddy@hotmail.com

The property information on this website is derived from the Canadian Real Estate Association's Data Distribution Facility (DDF®). DDF® references real estate listings held by various brokerage firms and franchisees. The accuracy of information is not guaranteed and should be independently verified. The trademarks REALTOR®, REALTORS® and the REALTOR® logo are controlled by The Canadian Real Estate Association (CREA) and identify real estate professionals who are members of CREA. The trademarks MLS®, Multiple Listing Service® and the associated logos are owned by CREA and identify the quality of services provided by real estate professionals who are members of CREA.