



Edmonton Alberta

\$399,900

Beautiful bi-level located in the heart of Delwood. This home has a spacious living room, 2+2 bedrooms total of 4 bedrooms. 2-4pc bath, spacious kitchen, fully finished basement with large windows. Single detached garage located on a good size lot close to school, shopping and transportation. (id:6769)

Bedroom 3 2.93 m X 3.39 m

Bedroom 4 3.54 m X 3.56 m

Living room 5.4 m X 3.5 m

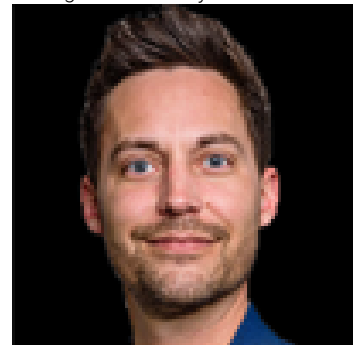
Dining room 2.8 m X 3.6 m

Kitchen 3.1 m X 3.6 m

Primary Bedroom 3.65 m X 3.66 m

Bedroom 2 3.65 m X 2.78 m

Listing Presented By:



Originally Listed by:
Sterling Real Estate

RE/MAX ELITE

RE/MAX Elite Sherwood Park

#116, 150 Chippewa Rd ,
Edmonton, Alberta,

Phone: 780-984-9399

Fax:

steveleddy@hotmail.com

The property information on this website is derived from the Canadian Real Estate Association's Data Distribution Facility (DDF®). DDF® references real estate listings held by various brokerage firms and franchisees. The accuracy of information is not guaranteed and should be independently verified. The trademarks REALTOR®, REALTORS® and the REALTOR® logo are controlled by The Canadian Real Estate Association (CREA) and identify real estate professionals who are members of CREA. The trademarks MLS®, Multiple Listing Service® and the associated logos are owned by CREA and identify the quality of services provided by real estate professionals who are members of CREA.