



Edmonton Alberta

\$499,900

Beautifully finished 2-storey in the sought-after community of Chappelle! Situated on a corner lot, this home offers extra yard space, additional windows, and incredible natural light throughout. The open-concept main floor features rich hardwood flooring, a stunning 3-sided gas fireplace shared between the living and dining areas, and stylish modern feature walls. The kitchen is designed for both function and style with granite countertops, raised eating bar, stainless steel appliances, tiled backsplash, ceiling-height cabinetry, pantry, and a picture window overlooking the yard. Upstairs offers 3 spacious bedrooms, convenient laundry, a full bath, and a primary suite complete with feature wall, walk-in closet, and 4-pc ensuite. Professionally finished basement includes a large family room with vinyl plank flooring, 4th bedroom, and full bath. Enjoy A/C, the oversized double garage, concrete walkways, private deck with privacy wall, and dedicated dog run. A move-in ready family home! (id:6769)

Bedroom 4 3.19 m X 3.05 m

Recreation room 5.45 m X 4.62 m

Living room 4.2 m X 3.91 m

Dining room 3.08 m X 2.6 m

Kitchen 3.34 m X 3.07 m

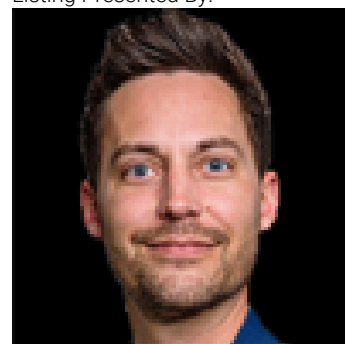
Primary Bedroom 4.29 m X 4.16 m

Bedroom 2 3.46 m X 2.84 m

Bedroom 3 3.46 m X 2.83 m

Laundry room 2.33 m X 1.72 m

Listing Presented By:



Originally Listed by:
Exp Realty

RE/MAX ELITE

RE/MAX Elite Sherwood Park

#116, 150 Chippewa Rd ,
Edmonton, Alberta,

Phone: 780-984-9399

Fax:

steveleddy@hotmail.com

The property information on this website is derived from the Canadian Real Estate Association's Data Distribution Facility (DDF®). DDF® references real estate listings held by various brokerage firms and franchisees. The accuracy of information is not guaranteed and should be independently verified. The trademarks REALTOR®, REALTORS® and the REALTOR® logo are controlled by The Canadian Real Estate Association (CREA) and identify real estate professionals who are members of CREA. The trademarks MLS®, Multiple Listing Service® and the associated logos are owned by CREA and identify the quality of services provided by real estate professionals who are members of CREA.